

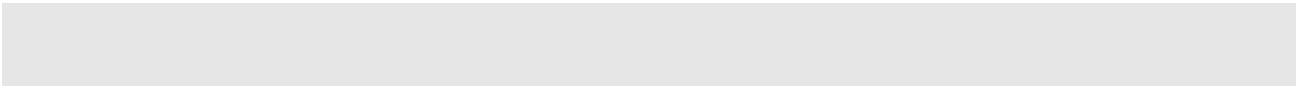
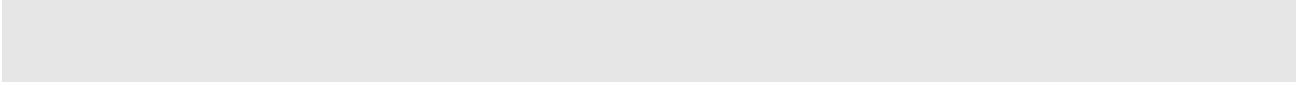


**RG-IDP**

**V1.0**

©2008





Arial



2.

3.

a

Enter a

" "

1+ 2  
" Alt" " A"

Ctrl+Alt+A " Ctrl"

1 2

Alt F Alt

F

	.....	3
	.....	3
1	.....	7
1.1	.....	7
1.2	.....	7
1.3	.....	7
1.4	.....	9
1.4.1	RG-IDP 500S .....	9
1.4.2	RG-IDP 500 .....	9
1.4.3		

4.6.3	RD-IDP	36
4.6.4	RG-IDP	39
4.6.5	/ Plug-in	43
4.6.6	RG-IDP	44
4.7		44
4.8	RG-IDP	45
4.8.1	RG-IDP Server	45
4.8.2	RG-IDP Management Client	46
4.8.3		47
4.8.4		47
4.8.5		47
4.9	RG-IDP Console	48
4.9.1	Console	48
4.9.2	(Help)	49
4.9.3		49
4.9.4	(System )	50
4.9.5	(Device)	54
	MySQL	59

# 1

## 1.1

## 1.2

5-95% RH

0 -45

90-264VAC 47-63Hz/4-2A

## 1.3

1.

2.

3.

4.



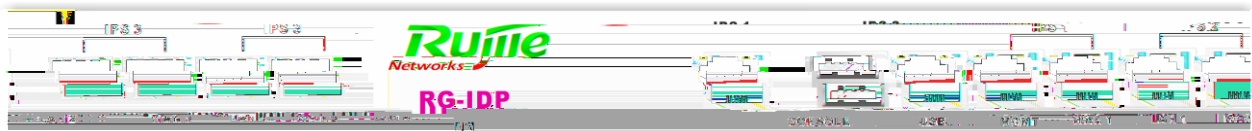
## 1.4

### 1.4.1 RG-IDP 500S



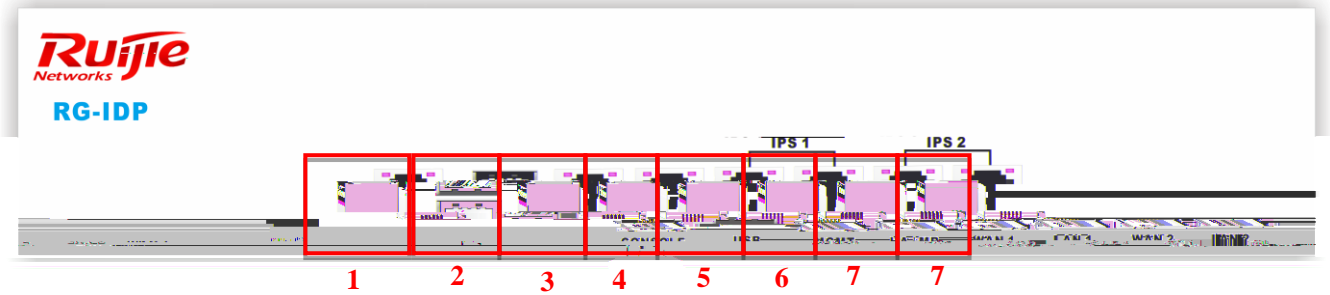
	1	2	3	4	5	6	7	8
	CONSOLE	USB	MGMT	HA/MR	WAN1	LAN1	WAN2	LAN2

### 1.4.2 RG-IDP 500



	1	2	3	4	5	6	7	8	9	10	11
	CONSOLE	USB	MGMT	WAN1	LAN1	WAN2	LAN2	WAN3			

### 1.4.3 RG-IDP 2000S



	1	2	3	4	5	6	7	8
	Console	USB	MGMT	HA/MR	WAN1	LAN1	WAN2	LAN2

Console                      ACE

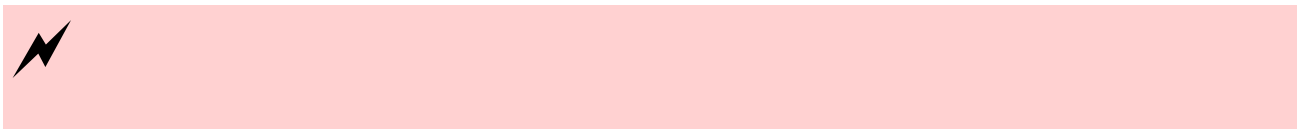
USB

HA/MR

MGMT

LAN                                      WAN

LAN                                      WAN



## 2 RG-IDP

RG-IDP

RG-IDP

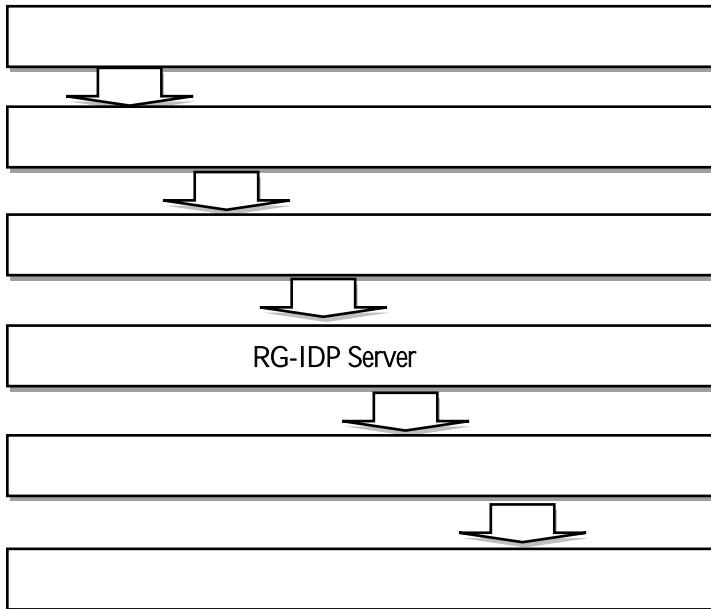
RG-IDP Server Plug-in

### 2.1 RG-IDP

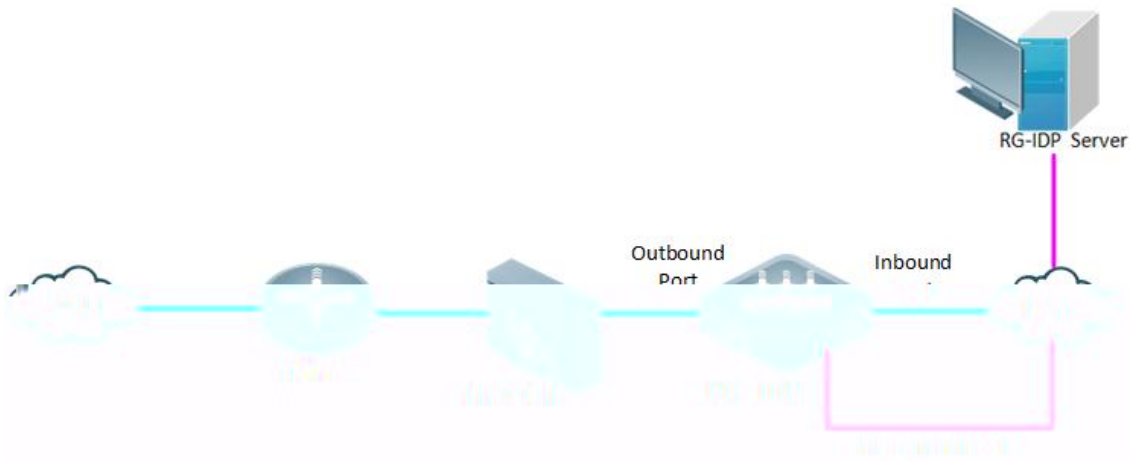
RG-IDP

RG-

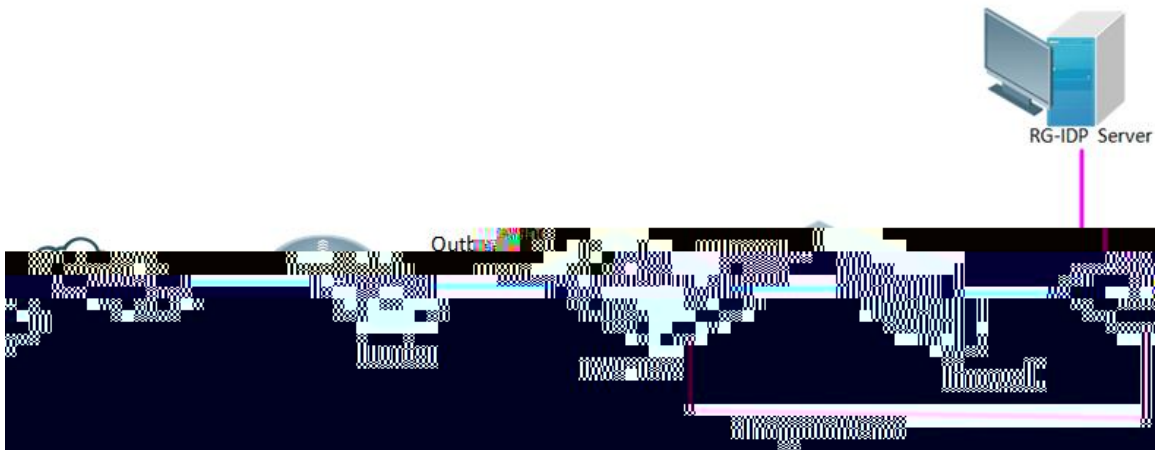
## 2.3 RG-IDP







RG-IDP



RG-IDP

### 3.3

server      RG-IDP server      RG-IDP      Management      RG-IDP

RG-IDP Server      RG-IDP      Management

## 3.4

RG-IDP  
RG-IDP Server

RG-IDP



RG-IDP



RG-IDP



## 4.3 RG-IDP Server

RG-IDP Server PC  
RG-IDP Server

RG-IDP RG-IDP Server  
RG-IDP Server

IP

RG-IDP Server

## 4.4

RG-IDP.exe

/

RG-IDP

RG-IDP Server Installation

### 4.4.1 JRE

RG-IDP Java

RG-IDP

Java Runtime Environment

### 4.4.3 RG-IDP Server

RG-IDP Server Install

RG-IDP Server

RG-IDP Server Installation

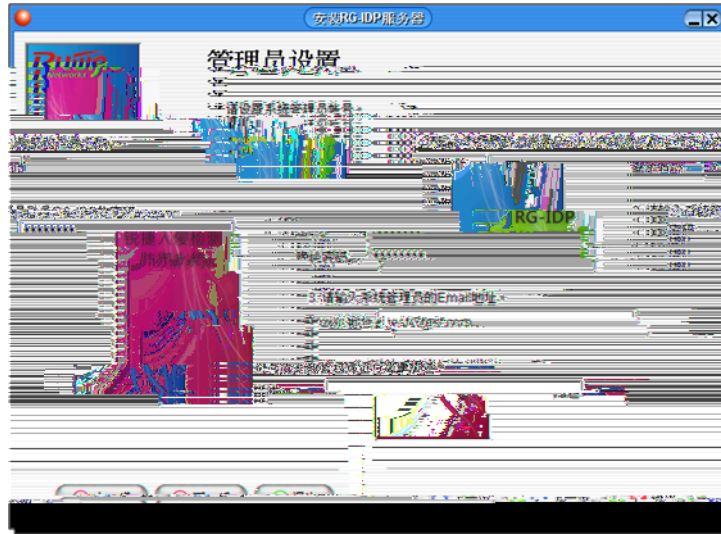
RG-IDP Server

:

: <RG-IDP Server Install>

RG-



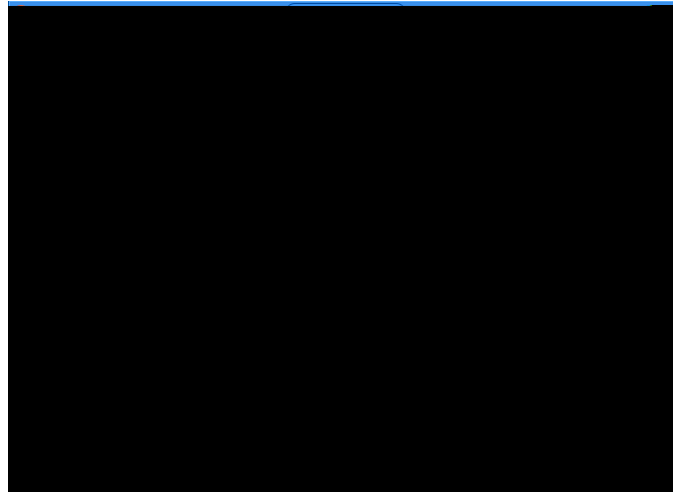


RG-IDP Server

RG-IDP

RG-IDP

:  
 : duc.Ruijie.com  
 : 4



**HTTP Server**

RG-IDP Server      HTTP Server  
 HTTP Server      HTTP Server (      )      HTTP Server  
 (      80 port)      RG-IDP Server      HTTP Server      IIS      Apache,  
 HTTP Server,



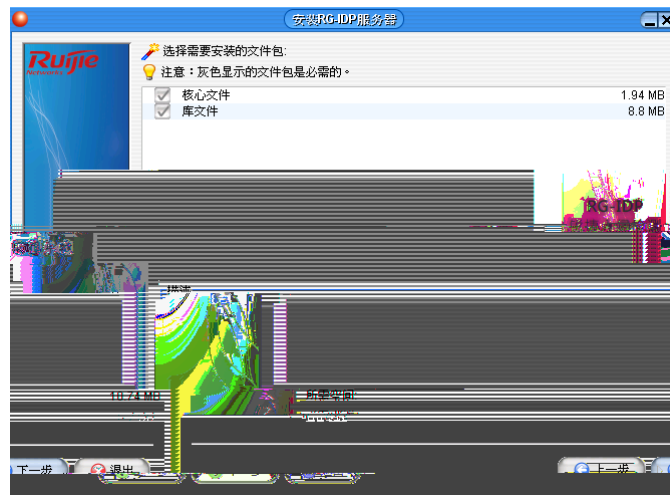
<http://<RG-IDP server IP address>/RG-IDP/ >

( Internet Explorer)  
RG-IDP

```
(INFO WARN ERROR)> <
>
Syslog      :      <syslog      IP      >      <localhost>
Syslog Facility:  syslog
:
(INFO)      :              7
(WARN)      :              30
(ERROR)
```

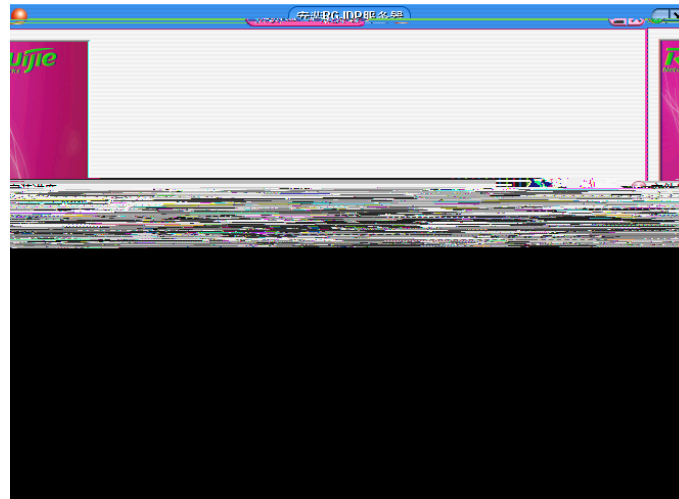


RG-IDP  
(Login Retry Lockout)



( )

### RG-IDP Server



RG-IDP Server

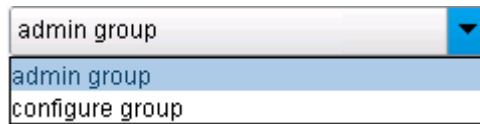
## 4.5 RG-IDP Server

RG-IDP Server

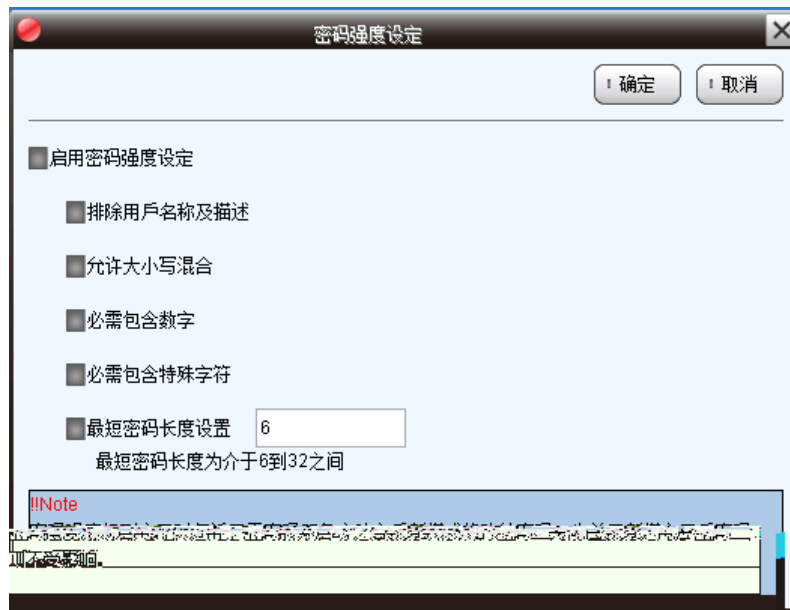


## 4.6.1

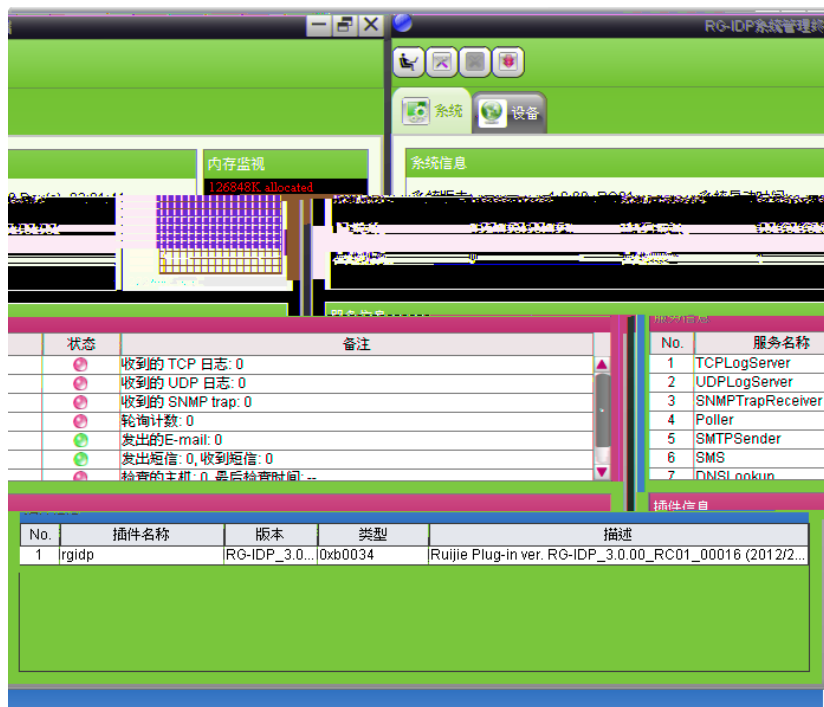
RG-



Admin Group  
Configure Group



### 4.6.3 RD-IDP



RG-IDP

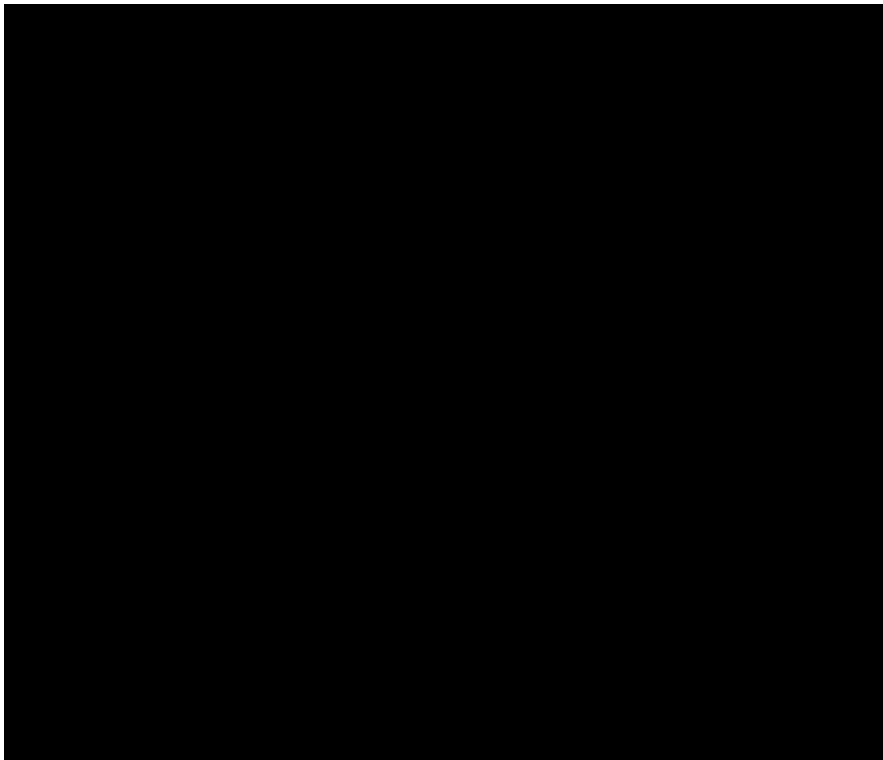


6~32





Plug-in



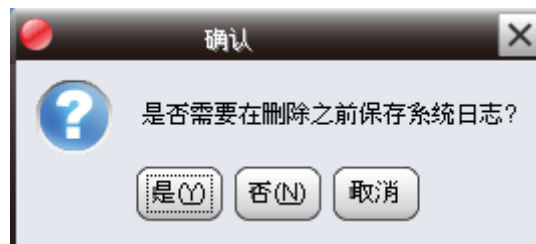
RG-IDP

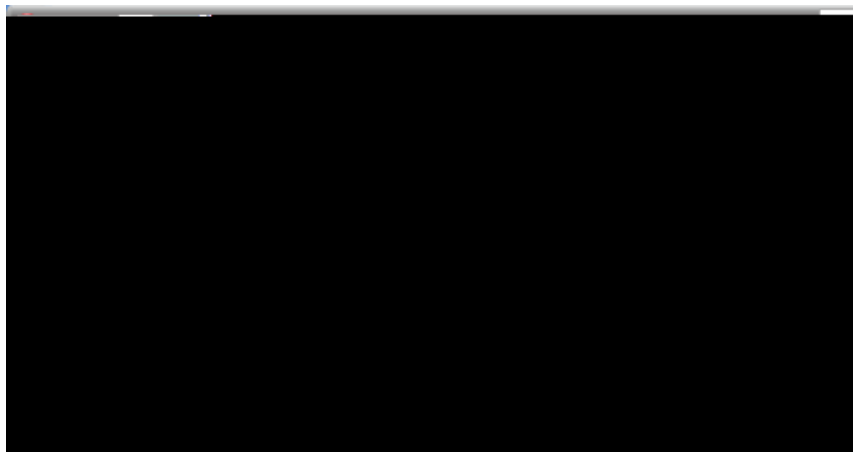
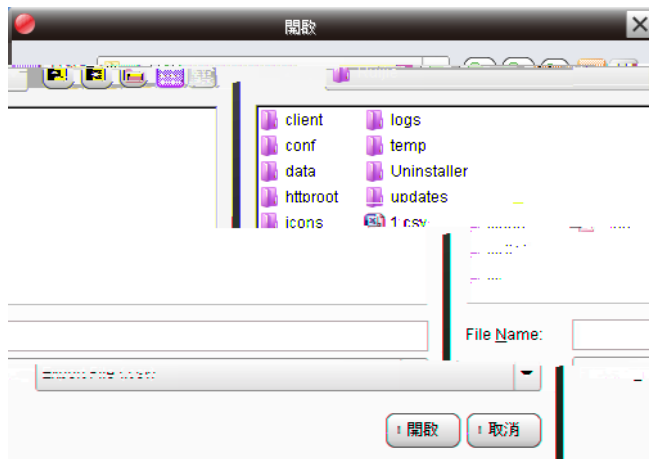






## RG-IDP





## 4.6.5 / Plug-in

RG-IDP  
RG-IDP

RG-IDP

plug-In

## 4.6.6 RG-IDP

RG-IDP Admin Console

Plug-in

Device



Device Profile

RG-IDP

<RG-IDP >

<RG-IDP IP >

(RG-IDP Server)

< >

< ok> RG-IDP

RG-IDP

RG-IDP

## 4.7

UTP (Cross-over UTP cable)

UTP (Through UTP cable)

RG-IDP

RG-IDP

:



RG-IDP

RG-IDP

RG-IDP

/

RG-IDP

WAN



RG-IDP








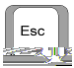
console

## 4.9.2 (Help)

Console

Arrow Key Enter Esc

{F1 | Help }

   	:
	<b>Enter</b> :
	<b>Esc</b> :

### 4.9.4 (System)

```

::
    <S> (System)
    All Status ( ):
    Log ( ):
    Password ( ):
    Renew Port ( )
    SSL Support ( SSL ) SSL
    Reset Config ( ):
    Stop System ( ): RG-IDP
    Reboot ( ): RG-IDP

    (All Status)
    System < |A}
    Enter> {ESC |S|D}
    :
    : RG-IDP RJ_3.0.0_RC01_00031 S.1_11-8173_RELS_00003
    Botnet RBL R.1_1108173_RELS_00003
    : 30 21 2 2
    : CPU 0% 0Mbps TCP 0
    : 802,352KB 8,388,608KB CF Card 935.32 MB
    952.41MB
    : IP 10.24.97.77 255.255.255.0 10.24.97.254 DNS
    192.168.168.228 RG-IDP 10.24.97.111
    : TCP 1800 5 5000
    
```



**(Interfaces)**

RG-IDP

System

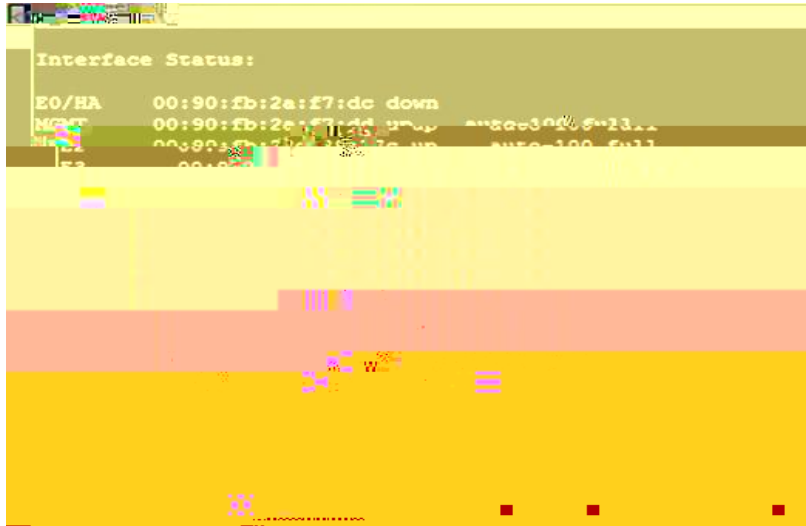
<{ | } Enter>

{ Esc

| S | D }

UP

DOWN



(Interfaces) -1

(erro

(drops)



(Interfaces) -2

**(Log)**

System

<{ | L },Enter>

{ |

Enter}

{ Esc

| <S>

| <D>

}

(Log)

RG-IDP :

/ / : yyyy/mm/dd

/ / : hh/mm/ss

: Event level

: Event source

: Message

: (I:Info) (W:Warning) (U:Urgent) (F:Fatal) :  
(CON:Console) SSH (SSH:SSH) (SYS:System) (PSS:Policy agent)

(Password)

RG-IDP System

Password changed successfully!

Password mismatch

SSL

(SSL Support)

System < { | x } Enter>

RG-IDP Server

RG-IDP Server

(Reset Config)

System < { | E } Enter>  
<Y> {N | Esc}

RG-

```

<S>system <D>evice
Device IP Address: 192.168.8.145
Device IPv6 Address: ::192.168.168.221
<Esc>Exit
    
```

(IP)  
 IP < IP Enter>  
 IP {N | Esc}

```

<S>system <D>evice
Device IP Address: 192.168.8.145
Device IPv6 Address: ::192.168.168.221
Are you sure you want to change IP? (y/N)
<Esc>Exit ...
    
```

(IP)  
 (Netmask)  
 RG-IDP Device <{ | M} Enter>  
 :

```

<S>system <D>evice
Device netmask: 255.255.255.0
Device IPv6 netmask: 32
<Esc>Exit
    
```

(Netmask)  
 (Gateway)  
 RG-IDP Device <{ | G}

---

Enter>

:

(Gateway)

```

<S>system <D>evice
Display connections: established
[1] Set display connection established.
[2] Set display connection total.
Set [1/2]: █
    
```

(Disp. Conn.)

**RG-IDP**

(RG-IDP Server)

```

RG-IDP          RG-IDP          Device      <{      |      B}
Enter>
RG-IDP          IP      Enter>          <Esc>
:
    
```

```

<S>system <D>evice
RG-IDP Server IP: ::192.168.50.13
    
```

RG-IDP (RG-IDP Server)

(VLAN ID)

```

RG-IDP          ID      Device      {      |      V}          Enter>
:
    
```

```

<S>system <D>evice
VLAN ID: 0
    
```

(VLAN ID)

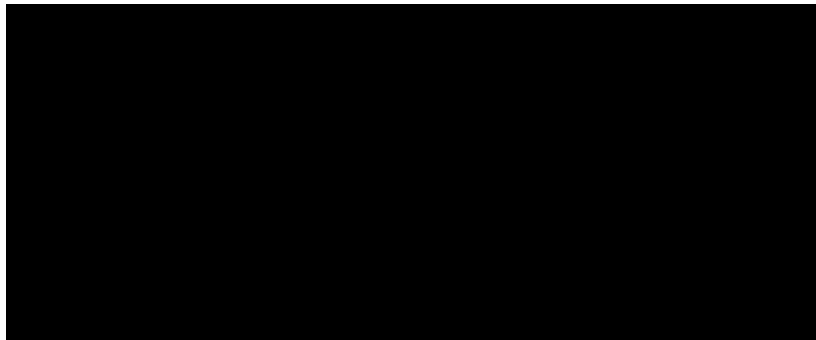
**PING**

RG-IDP

Device

&lt;Enter&gt;

:



Ping

&lt; Ping IP &gt; &lt;Enter&gt;

IP

```
<S>system <D>evice
PING 192.168.8.140 (192.168.8.140): 56 data bytes
64 bytes from 192.168.8.140: icmp_seq=0 ttl=128 time=5.0 ms
64 bytes from 192.168.8.140: icmp_seq=1 ttl=128 time=0.2 ms
64 bytes from 192.168.8.140: icmp_seq=2 ttl=128 time=0.2 ms
64 bytes from 192.168.8.140: icmp_seq=3 ttl=128 time=0.2 ms
64 bytes from 192.168.8.140: icmp_seq=4 ttl=128 time=0.2 ms

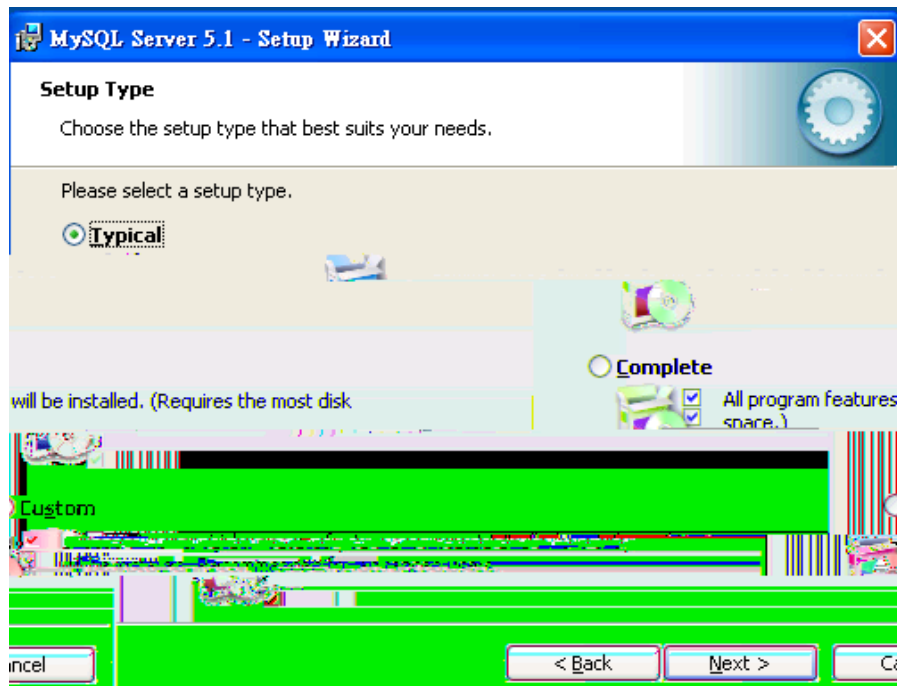
--- 192.168.8.140 ping statistics ---
5 packets transmitted, 5 packets received, 0% packet loss
round-trip min/avg/max = 0.2/1.1/5.0 ms

Press any key to continue.
<Esc>Exit
```

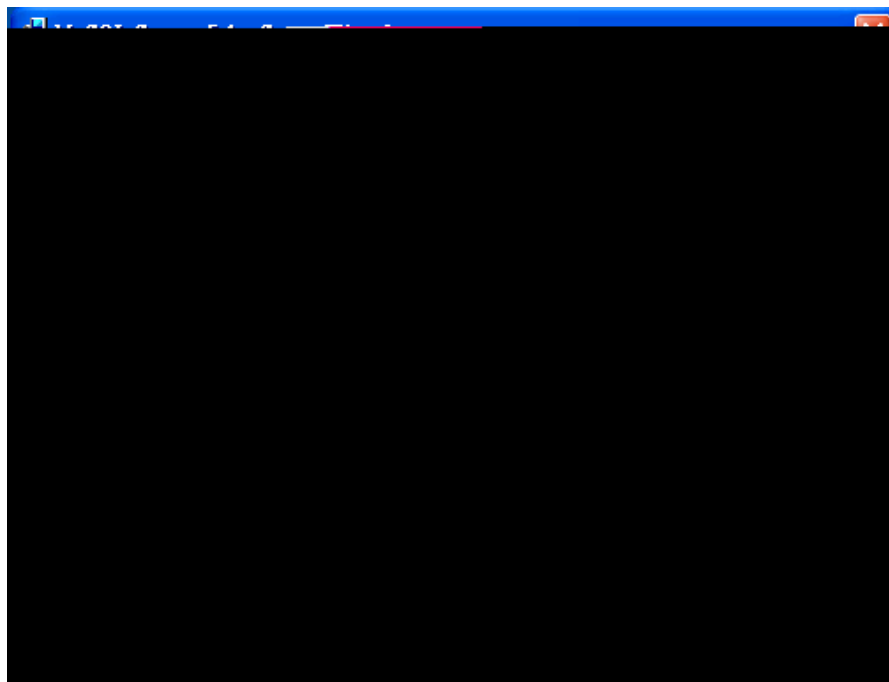
PING

RG=IDP Server



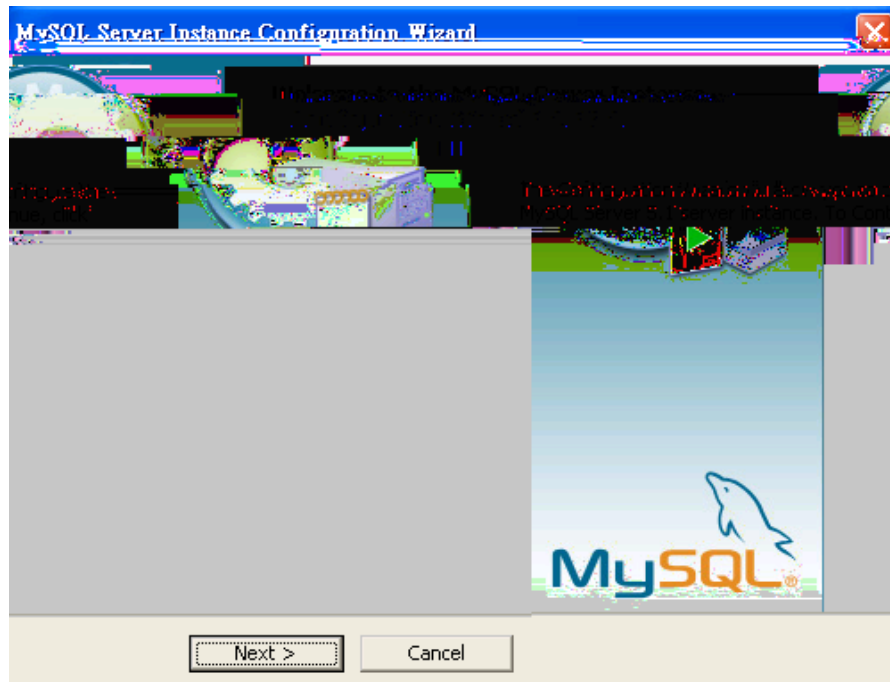


3. Ready to Install the Program <Install>

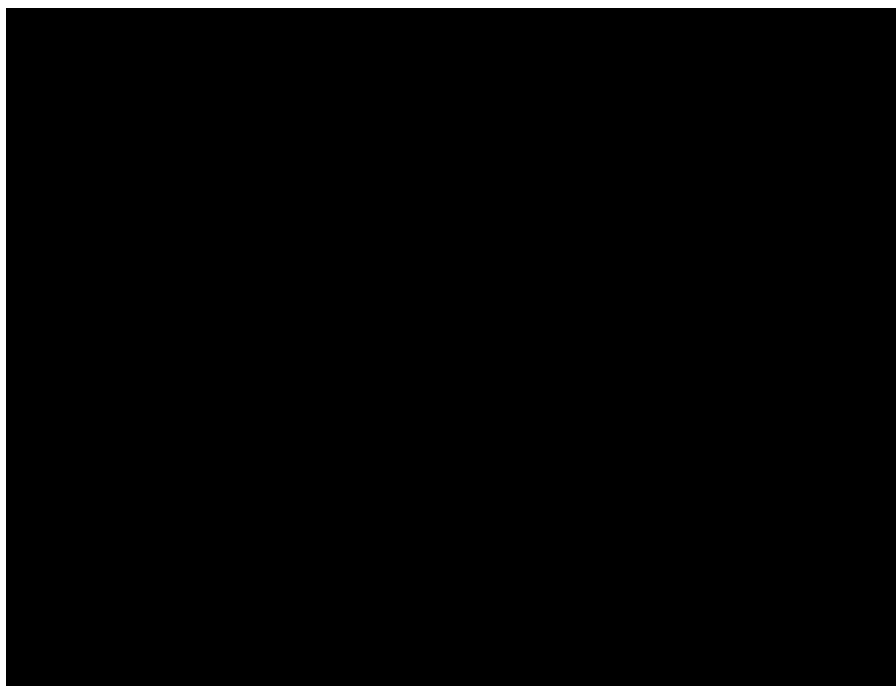


4. MySQL Enterprise MySQL Enterprise <Next>

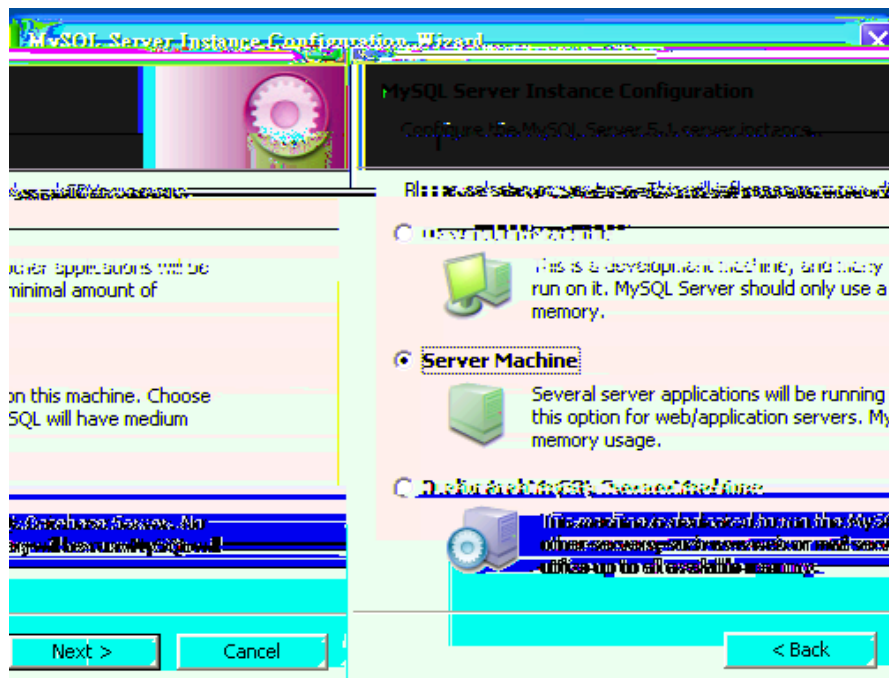




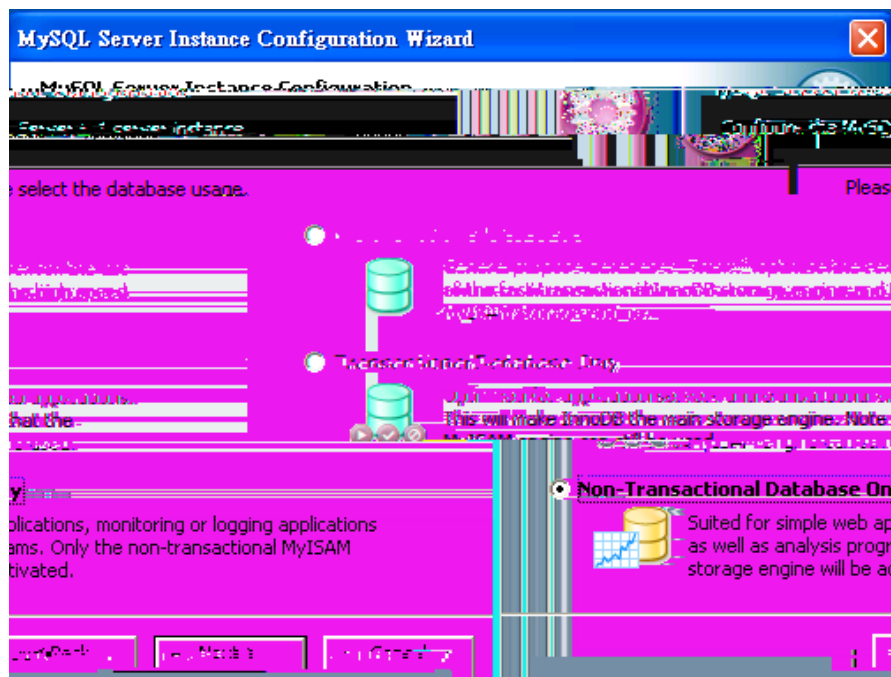
7. MySQL Server Instance Configuration <Detailed Configuration>



8. server type Server Machine <Next>

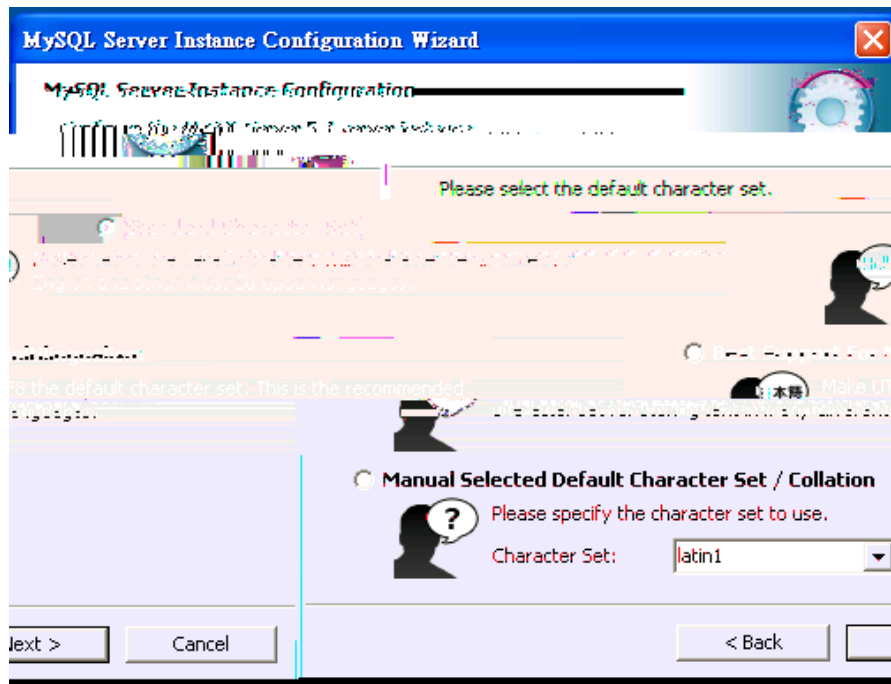


9. database usage **Non-Transactional Database Only** <Next>

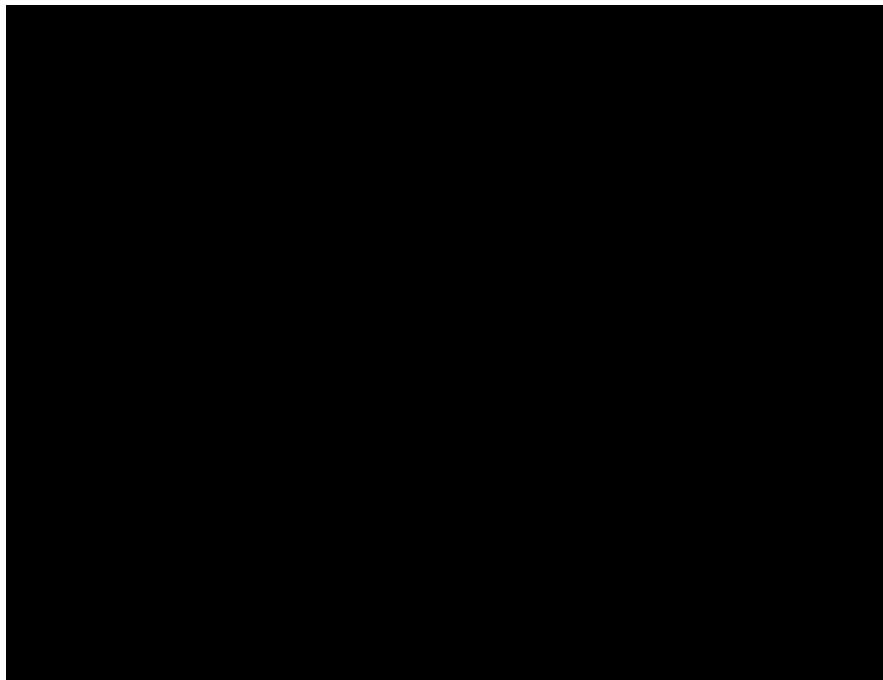


10. Approximate number of concurrent connections to the server **Decision**  
**Support (DSS)/OLAP** <Next>





13. **Windows options**      **Install As Windows Service**    **Launch the MySQL Server automatically**    **Include Bin Directory in Windows PATH.**



14. **security options**      **Modify Security Settings**      **MySQL**  
 root      <Next>

15. Ready to execute <Execute>.

16. #

