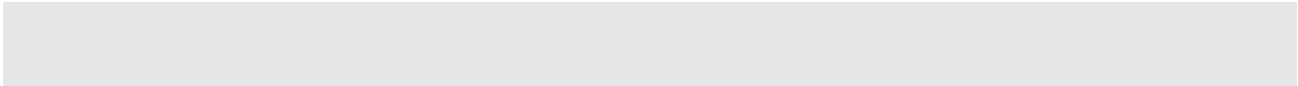


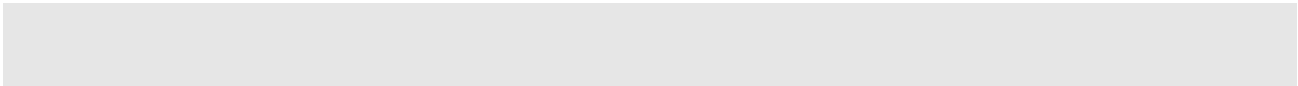
WGP500

©2008





,
,
,



Arial

[] []

{ x|y|... }

[x|y|...]

//

1.

r

2.

/

3.

a

Enter a

" "

1+ 2
" Alt" " A"

Ctrl+Alt+A " Ctrl"

1 2

Alt F Alt

F

1.5		5
2		7
2.1		7
2.2		7
3		8
3.1		8
3.2	IE	Web	9
3.3		11
3.4		14
3.5			
4.4	802.1Q VLAN	22
4.5		23
4.6		24
4.7		28
4.8		28
4.9		30
4.10	Smart WDS	31
4.11		32
5		36
5.1		36
5.2	STA	36
5.3		37
5.4		37
5.5		38
5.6		39
5.7		41
5.8		41
5.9	AP	42
5.10		46

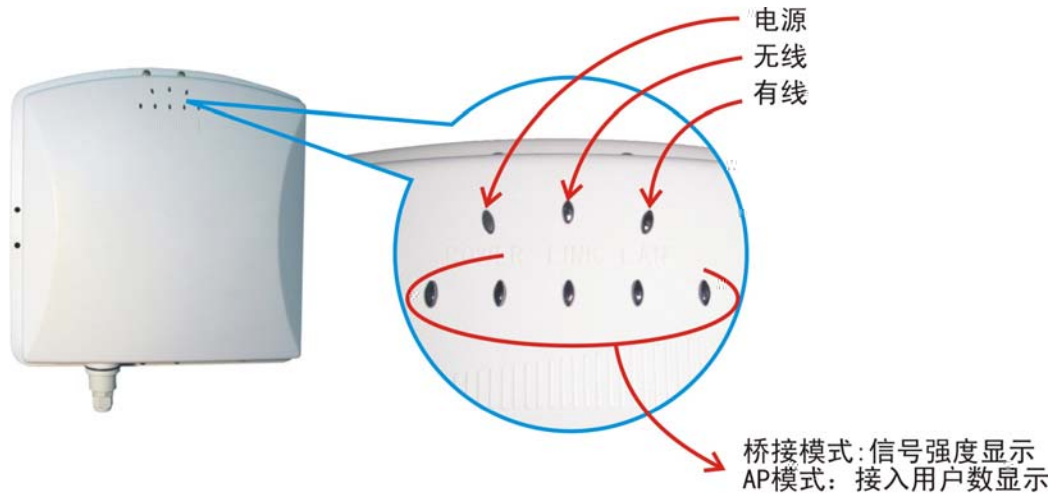
6	FAQ	47
6.1	MAC	47
6.2	STA AP?	47
6.3	?	47
6.4	48
6.5	..	48
6.6	WEB	49
7	50
7.1	50
7.2	53
7.3	ASCII	54

1

IEEE 802.11g ,
ISP

RG-WGP500 2.4GHz ,
RG-WGP500

1.1



MAC

WEP64/128/152

802.1X, WPA, WPA-PSK, WPA2, WPA2-PSK

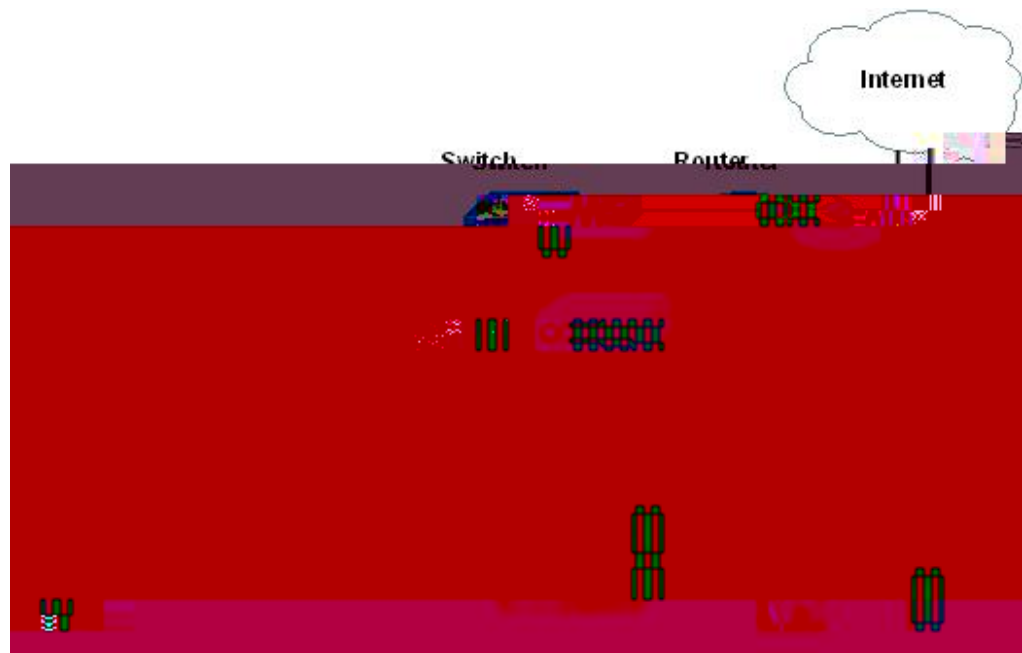
8 VAP(Virtual Access Point) 802.1Q VLAN

Super Regatter

WEB,SNMP, CLI

12V

1.4



1.5

E-mail

3

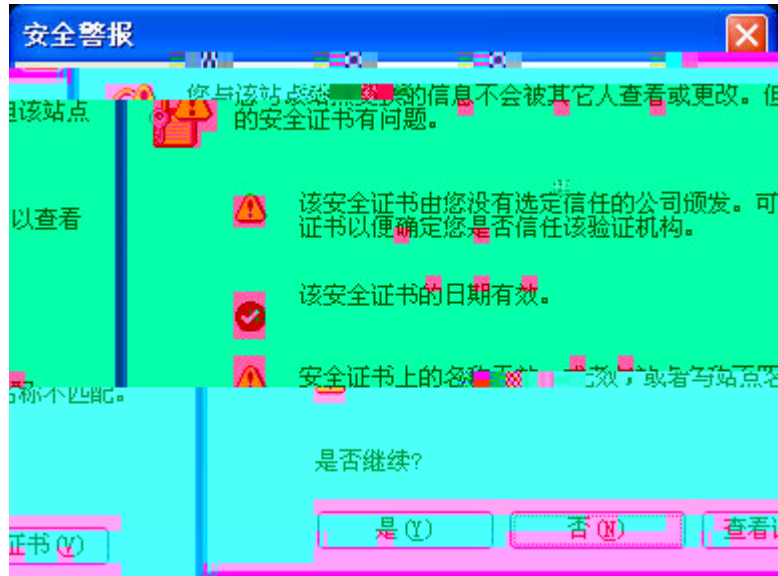
3.1

	admin
	password
	APxxxxxx xxxxxx 6 MAC
/	
AP	
IP	IP STATIC IP 192.168.0.228 255.255.255.0 0.0.0.0 / DNS 0.0.0.0
	802.11g
/	13/2.472GHz
	48Mbps
	Full
CTS	
RTS	2346
	2346
	100
DTIM	1

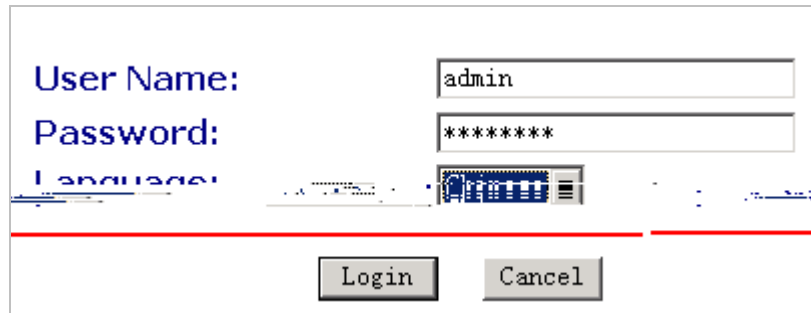
WMM	
SSID	Wireless
802.1Q VLAN	Disable
NTPD	
VoIP	
SNMP	SNMP Trap Server 192.168.0.254 Read Community public Write Community private

3.2 IE Web

Web



2. " "



3. Username

基本信息

接入点信息

接入点名称	AP8e7d1b
MAC地址	00:60:B3:8E:7D:1B
无线卡片名称	XG-622H
国家区域	中国
软件版本号	4.0.9_b500 (Jul 25 2007)
Bootloader版本	1.9(c) 2006/10/25
虚拟局域网	关闭
管理 VLAN ID	

当前IP设定

IP类型	STATIC
IP地址	192.168.0.229
子网掩码	255.255.255.0
默认网关	0.0.0.0

当前无线设定

操作模式	桥接 (多点)
信道/频率	1 / 2.412GHz

安全配置文件

状态	No.	配置文件名称	SSID	安全	VLAN
打开	1	Profile1	Wireless	开放系统	

3.3

基本设置

接入点名称: AP32f2b9

国家区域: 中国

有线端速率: 自适应

启用 NAT

网桥 路由器

生成树协议: 打开 关闭

STATIC

192.168.0.228 IP地址

255.255.255.0 子网掩码

0.0.0.0 默认网关

0.0.0.0 主DNS服务器

0.0.0.0 从DNS服务器

应用 取消 帮助

```

a-z NetBIOS 15 0-9 A-Z
- WINS " "
IP WEB ap030201
IE " ap030201" Enter WEB
ping Ping ap030201
    
```

```

APxxxxxx xxxxxx MAC 6 u
u WINS TCP/IP
IP IP 192.168.0.228 IP
192.168.0.X u
    
```

```

/
2.4GHz
/
/ 2.4GHz
    
```

/	(802.11g and 11b)
	1-13
	1-13

	1-13
	1-13
	1-13
	1-13
	1-13



	DHCP Client	DHCP Server	IP
	DNS	DNS	
	"	"	"



RTS

CTS

RTS

AP

AP

AP

AP

256-2346

MAC

RTS

RTS

0

RTS/CTS

u

20 1000

DTIM

1 255

AP

STA

STA

STA

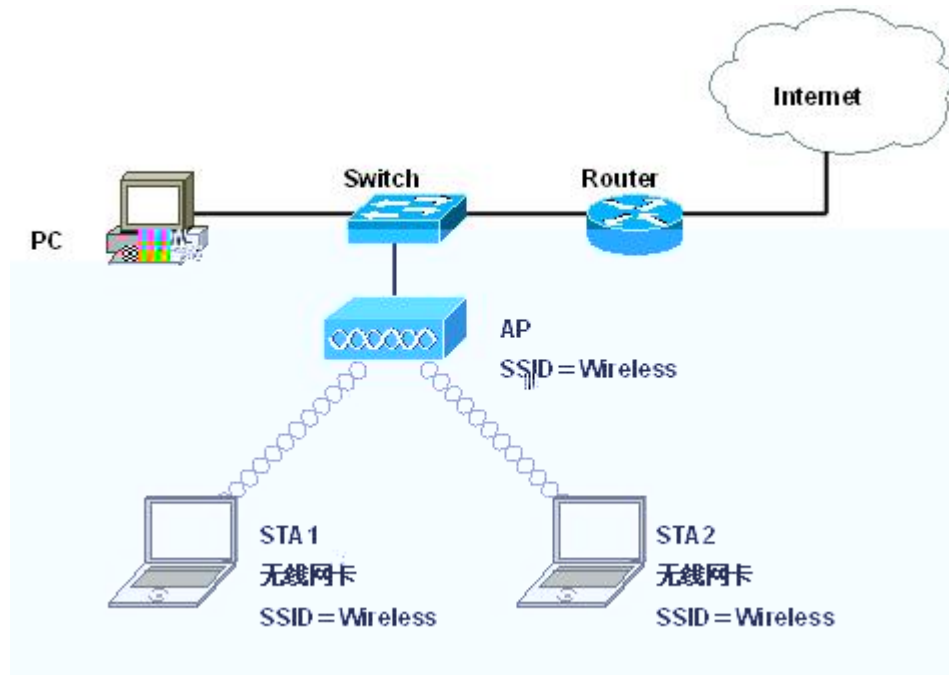
AP

AP

Super G Super

5M

STA

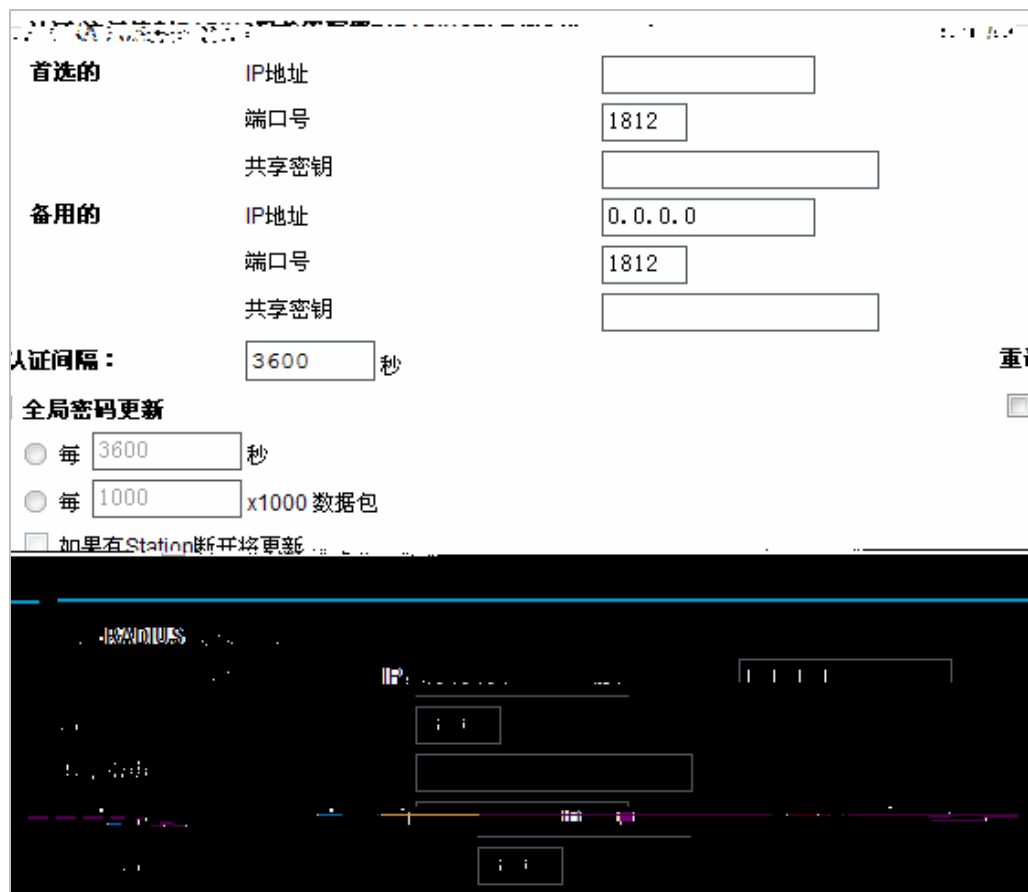


STA1	STA2	SSID	AP	PC	Internet
1.			AP		801.11b
2.	"	"	Profile1~9		802.1Q VLAN
3.	Profile				ESSID, Security
	802.1X	WPA	Radius		
4.	STA	AP			

4

4.1 RADIUS

RADIUS



/ RADIUS

RADIUS RADIUS IP
RADIUS RADIUS RADIUS
IP RADIUS IP

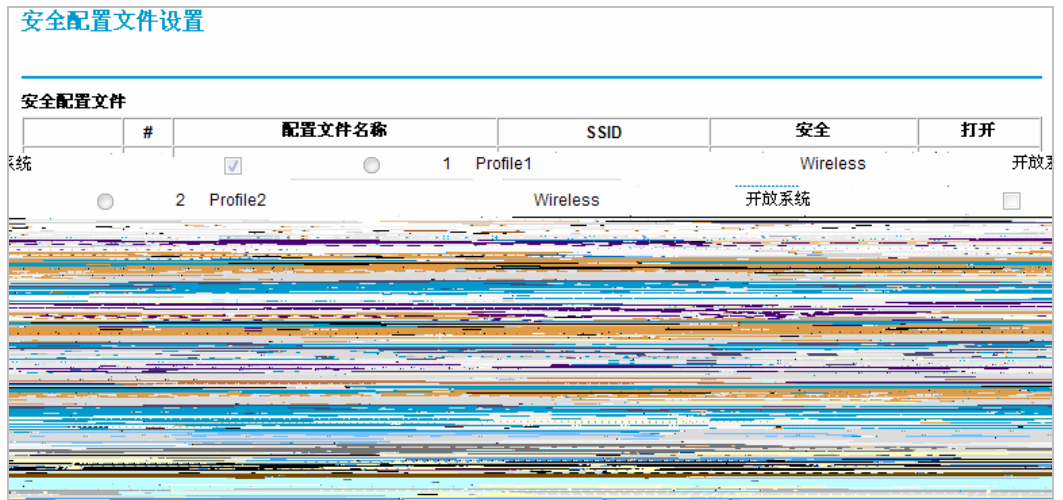
	RADIUS			
	AP	RADIUS		31
			STA	
			STA	

RADIUS

	RADIUS	RADIUS	IP	RADIUS
IP	RADIUS	IP		
	: RADIUS			
	AP	RADIUS		31

4.2 VAP AP

VAP			AP	8	AP
8	VLAN		ESSID	ESSID	



Profile



IEEE 802.1x

802.1x, RADIUS Server ,
EAP 802.1x WEP
WPA with Radius, WPA2 with Radius, WPA & WPA2 with Radius
RADIUS
WPA-PSK, WPA2-PSK, WPA-PSK & WPA2-PSK WPA WLAN (AP
)
64 bits 10
128 bits 26
152 bits 32
TKIP WPA with Radius WPA-PSK
AES WPA 2with Radius WPA2-PSK
TKIP+AES WPA & WPA2 with Radius WPA-PSK&WPA2-PSK
> Passphrase " "
>

4.3 Bridge

Bridge

TKIP AES

WEP, TKIP, AES

WDS

安全配置文件 9 配置

网络认证方式：

数据加密方式：

Passphrase：

密钥 1：

密钥 2：

密钥 3：

密钥 4：

对等模式认证者角色 否 是

WDS

4.4 802.1Q VLAN

AP

802.1Q VLAN

启用 802.1Q VLAN

管理 VLAN ID:

安全配置文件VLAN ID:

Profile1 VLAN ID:

Profile2 VLAN ID:

Profile3 VLAN ID:

Profile4 VLAN ID:

Profile5 VLAN ID:

Profile6 VLAN ID:

Profile7 VLAN ID:

Profile8 VLAN ID:

VLAN ID	VLAN ID	AP
VLAN ID		
	VLAN ID	
	SSID	
4094	ID	VLAN ID ID 1~ ID

配置AP作为

网桥 路由器 启用 AnyIP 启用 NAT

广域网端口

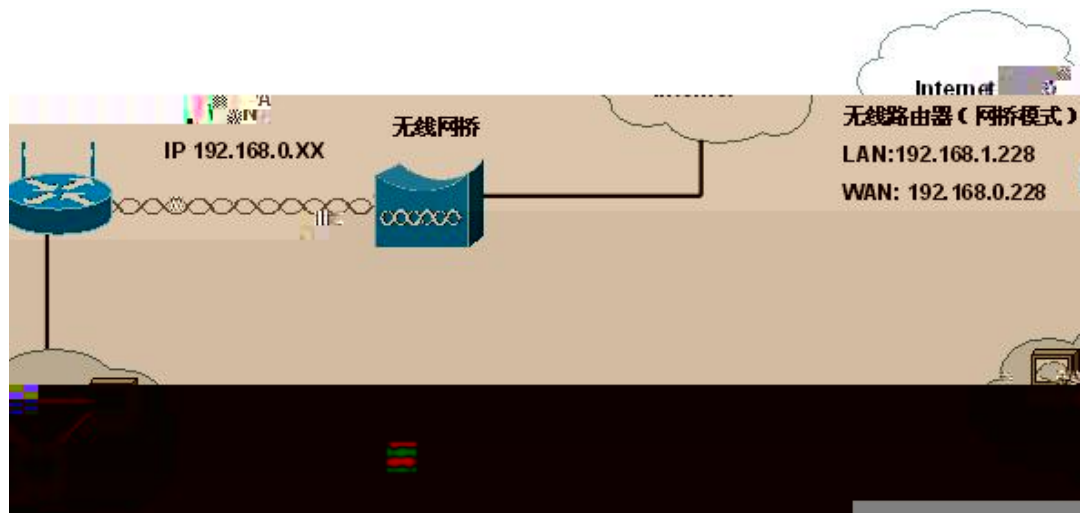
有线端

IP地址	<input type="text" value="192.168.0.228"/>
子网掩码	<input type="text" value="255.255.255.0"/>
默认网关	<input type="text" value="0.0.0.0"/>
主DNS服务器	<input type="text" value="0.0.0.0"/>
从DNS服务器	<input type="text" value="0.0.0.0"/>

无线端

IP地址	<input type="text" value="192.168.1.228"/>
子网掩码	<input type="text" value="255.255.255.0"/>
默认网关	<input type="text" value="0.0.0.0"/>

IP WAN IP LAN IP

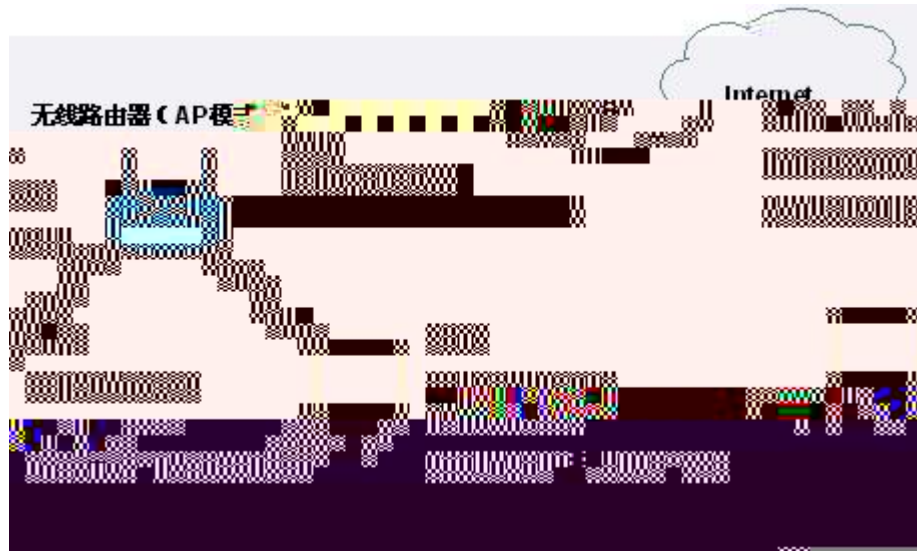


AP

" AP "

WAN

LAN



AP+

" AP+ "

WAN

LAN



AnyIP

LAN

IP



Super G

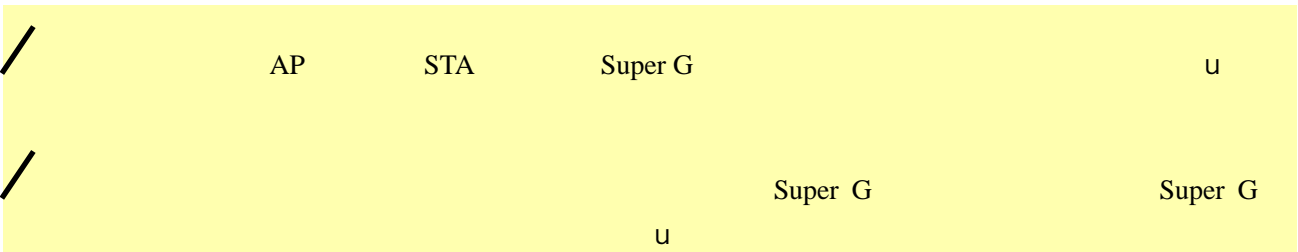
Super G

AP Super G

Super G

Super G

	Super G	Super G
AP	22Mbps	30Mbps
	22Mbps	24Mbps



108Mbps

108Mbps SuperG 802.11g / 6/2.637GHz
108Mbps

AP 108M

108Mbps

	108Mbps	108Mbps
AP	22Mbps	35Mbps
	22Mbps	36Mbps

AP 108Mbps

108Mbps

108Mbps

	108Mbps	108Mbps
--	---------	---------

4.10 Smart WDS

Smart WDS ID	WDS ID	WDS MAC
" WDS ID	" Smart WDS" Bridge123	ID 32
ID	Smart WDS	" " " "

WDS设置

操作模式

无线端隔离 是 否

无线点对多点桥接

启用 Smart WDS

WDS组ID

AP MAC

下行流量 : : : : : ×64Kbps

手工添加点对多点MAC地址/下行流量
MAC地址/下行流量

Smart WDS ID	WDS ID	WDS MAC
8	Smart WDS 9	ID 10
9	ID 11	ID
	2	ID

Smart WDS

u

4.11

IP

WDS设定

操作模式:

无线端隔离: 是 否

无线点对多点桥接

MAC地址/下行流量:

删除:

启用 Smart WDS

WDS组ID:

AP MAC:

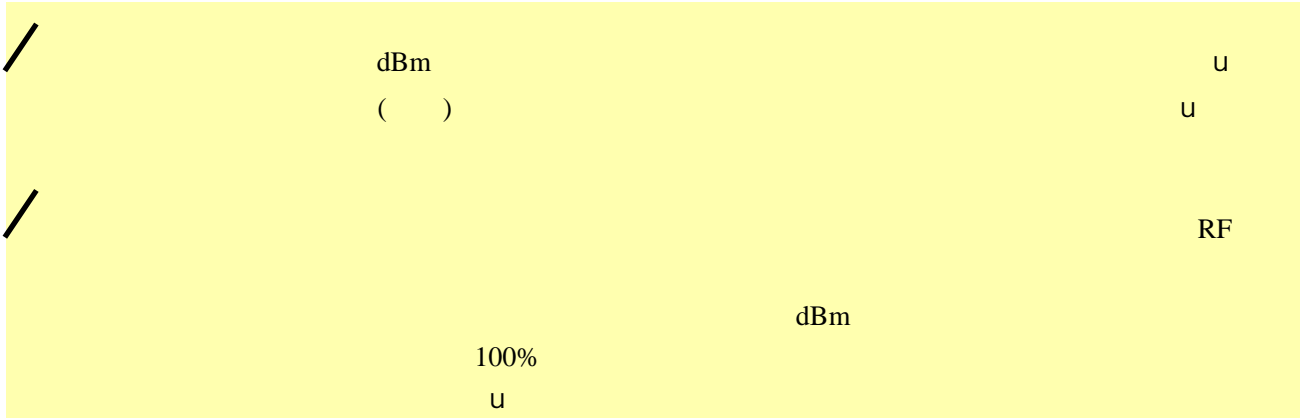
下行流量: : : : : : ×64Kbps

添加:

手工添加点对多点MAC地址/下行流量:

IP	API
192.168.0.227u	
/	/
u	

3. ping
PC1 ping 192.168.0.2 PC2 192.168.0.227 API 192.168.0.228 AP2
 4. /
PC1 PC2 /
 5. " "
 6. " " 10000m "
- RF



7.

无线STA列表

STA ID	MAC地址	IP地址	RSSI(dBm)	状态	输出数据包	输入包	输出字节	输入字节
1	00:16:6F:06:B7:AE		-67	Associated	2	1	84	342

刷新

更改密码

当前密码

新密码

重输新密码

恢复默认密码 是 否

19

"

"

password

password

5.5

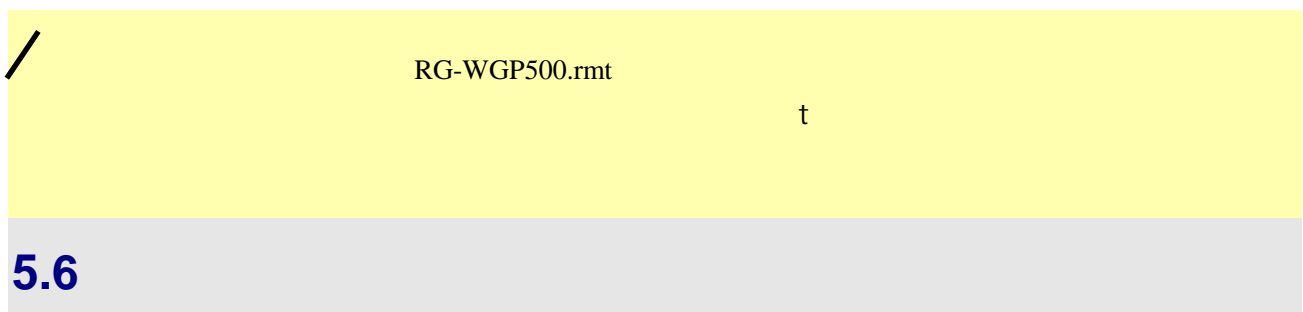
WEB

更新软件

浏览查找软件文件:

```
C:\>ftp 192.168.0.228
Connected to 192.168.0.228.
220 (vsFTPD 1.1.3)
User (192.168.0.228:(none)): admin
331 Please specify the password.
Password:
230 Using binary mode to transfer files. Login successful. Have fun.
ftp> put RG-WGP500.rmt
200 PORT command successful. Consider using PASV.
150 Ok to send data.
226 File receive OK.
ftp: 3973128 bytes sent in 0.55Seconds 7263.49Kbytes/sec.
ftp> quit
221 Goodbye.
```

3.



Web

备份 / 恢复设定

当前设定备份到一个文件 备份

从文件中恢复备份设定

文件: 浏览...

恢复

恢复出厂默认设定 恢复

1. " / " " "
C:\RG-WGP500.cfg
RG-WGP500.cfg
2. " / " " "
C:\RG-WGP500.cfg " "

FTP

1. ftp 192.168.0.228 admin password
2. " get RG-WGP500.cfg"
C:\RG-WGP500.cfg

```
C:\>ftp 192.168.0.228
Connected to 192.168.0.228.
220 (vsFTPD 1.1.3)
User (192.168.0.228:(none)): admin
331 Please specify the password.
Password:
230 Using binary mode to transfer files. Login successful. Have fun.
ftp> get RG-WGP500.cfg
200 PORT command successful. Consider using PASV.
150 Ok to send data.
226 File receive OK.
ftp: 3973128 bytes sent in 0.55Seconds 7263.49Kbytes/sec.
ftp> quit
221 Goodbye.
```

3. " put RG-WGP500.cfg"

/

RG-WGP500.cfg

t

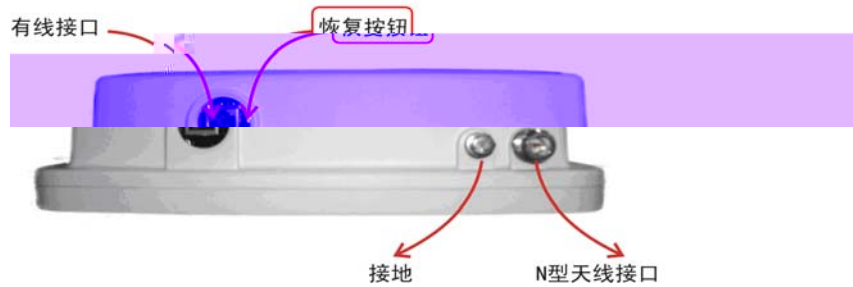
5.7

Web

" / " " "

Reset

" Reset" 5



5.8

" " " "

重启AP

重启AP: 是 否

5.9

AP

SNMP

SSH

PPTP

设备管理语言

SNMP

打开 关闭

Trap Server IP:

Read Community:

Community: Write C

SSH

用户名:

密码:

IP地址:

- > Read Community
- > Write Community
- > " "

2. FTP MIB file

```
ftp 192.168.0.228 admin password  
" get RG-WGP500.mib"  
RG-WGP500.mib
```

```
C:\>ftp 192.168.0.228  
Connected to 192.168.0.228.  
220 (vsFTPD 1.1.3)  
User (192.168.0.228:(none)): admin  
331 Please specify the password.  
Password:  
230 Using binary mode to transfer files. Login successful. Have fun.  
ftp> get RG-WGP500.mib  
200 PORT command successful. Consider using PASV.  
150 Opening BINARY mode data connection for /mnt/ramd/RG-WGP500.mib (35518  
bytes).  
226 File send OK.  
ftp: 35518 bytes received in 0.03Seconds 1183.93Kbytes/sec.  
ftp> quit  
221 Goodbye.
```

RG-WGP500.mib

SSH AP

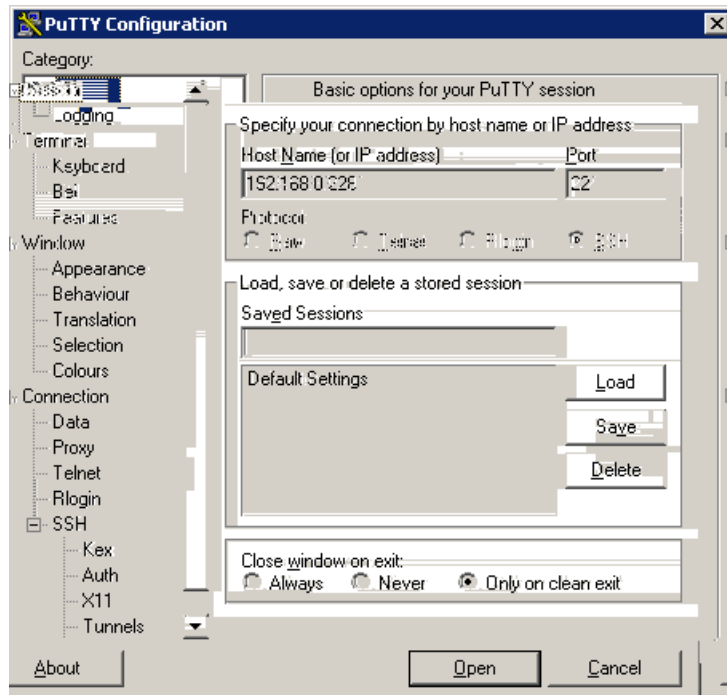
CLI SSH Putty

1. Putty

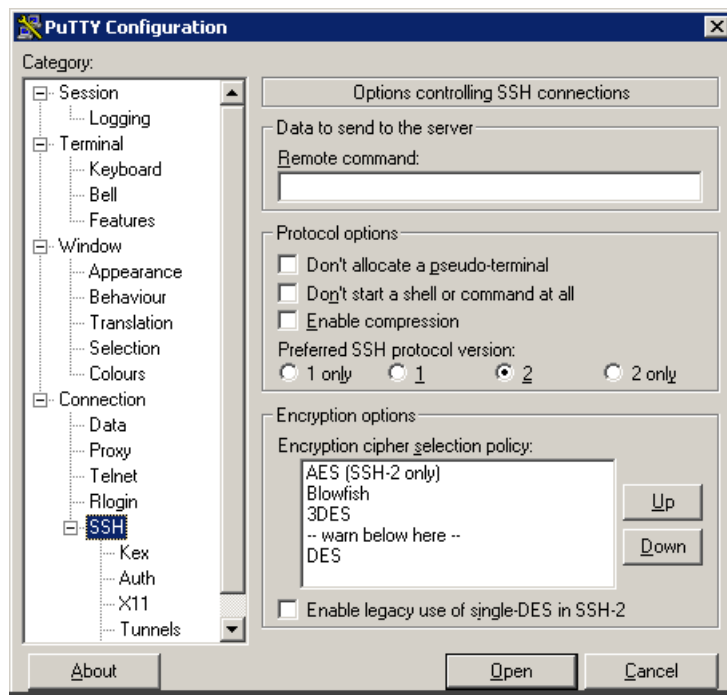


putty.exe

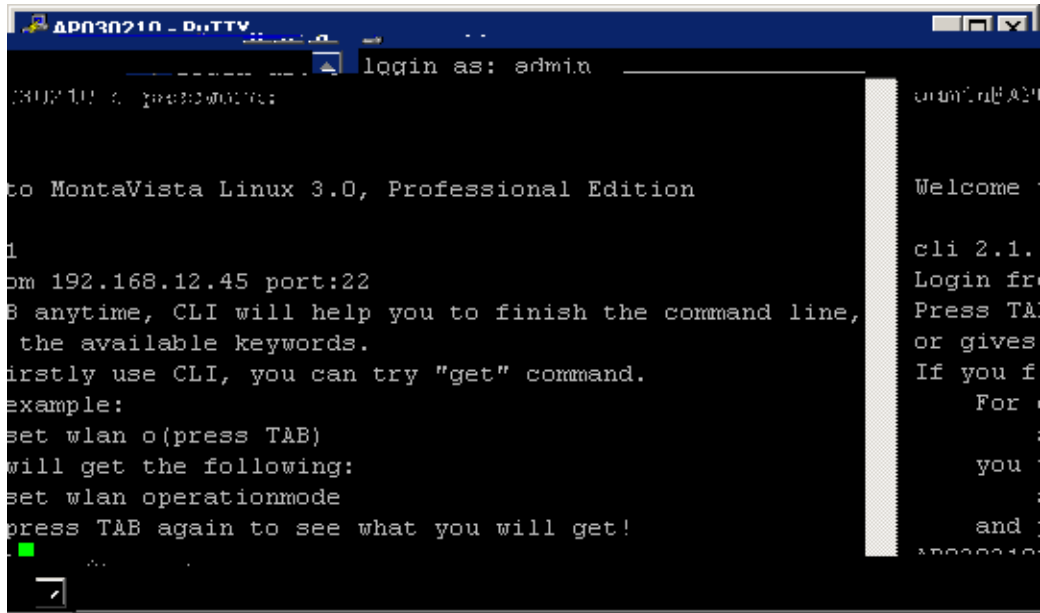
2. IP , Protocol SSH.



3. "SSH" Encryption cipher selection policy ,
"3DES"



4. Open



/ admin/password

5. " help"

PPTP AP

PPTP	PPTP	SERVER	VPN
Win2000server/Win2003Server	SERVER		

1. SERVER

```

' " MS-CHAPV2"
' IP " IP " " IP
' "
    
```

2. PPTP PPTP

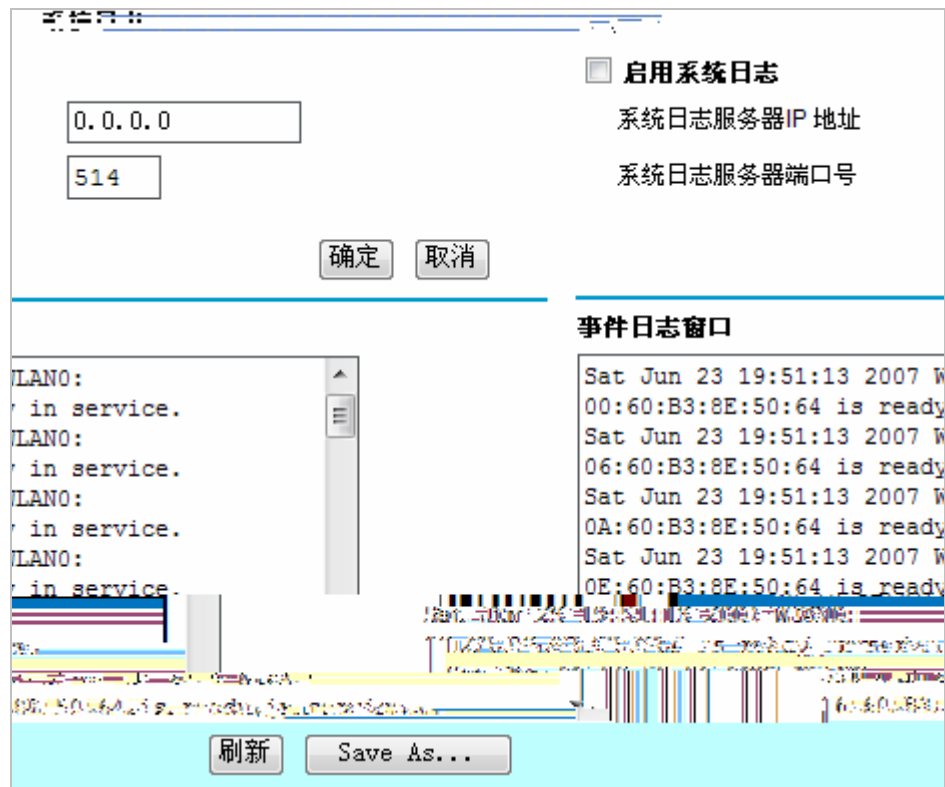
3. VPN " "

4. PPTP IP

5. PPTP

5.10

STA



6 FAQ

6.1 MAC

MAC

MAC

Web

MAC

6.2 STA AP?

STA
AP

AP

STA

STA
AP

AP
AP

AP

STA

STA

STA
STA
AP

2.4G

STA AP
AP

STA

802.11

6.3 ?

Super G	
(Regatta)	
XDos	

WEP

64 / 128 / 152

WPA

WPA WPA2 WPA PSK WPA2 PSK

7.2

802.11g	IEEE802.11g OFDM	ISM 2.4GHz	11a 54Mbps	11b	54Mbps
Access Point	Access Point		AP	PC	AP
Infrastructure				Access Point	
ESS	infrastructure Service Set (ESS) AP	ESS ESSID	ESS channel	BSS roaming	BSSs roaming
WEP	“Wired Equivalent Protection ” encryption IEEE 802.11		WEP		WEP 40bits/128bits
Access Control	Access Control table			MAC AP	
Bridge	OSI				
DHCP Client Server	DHCP DHCP	DHCP DHCP Server	IP	IP	DHCP Client
Encryption				WAN	
IP Address and Network Mask		IP			
LAN&WAN					
MAC Address		MAC	6	IEEE	MAC
NetBIOS					

-	2D	E	45]	5D	u	75
.	2E	F	46	^	5E	v	76
/	2F	G	47	_	5F	w	77
0	30	H	48	`	60	x	78
1	31	I	49	a	61	y	79
2	32	J	4A	b	62	z	7A
3	33	K	4B	c	63	{	7B
4	34	L	4C	d	64		7C
5	35	M	4D	e	65	}	7D
6	36	N	4E	f	66	~	7E
7	37	O	4F	g	67		
8	38	P	50	h	68		