



copyright © 2021



<http://www.ruijie.com.cn/>

<http://webchat.ruijie.com.cn>

<http://www.ruijie.com.cn/service.aspx>

7× 24

4008-111-000

4008111000@ruijie.com.cn

1

RG-S2600G-I

QOS

RG-S2600G-I

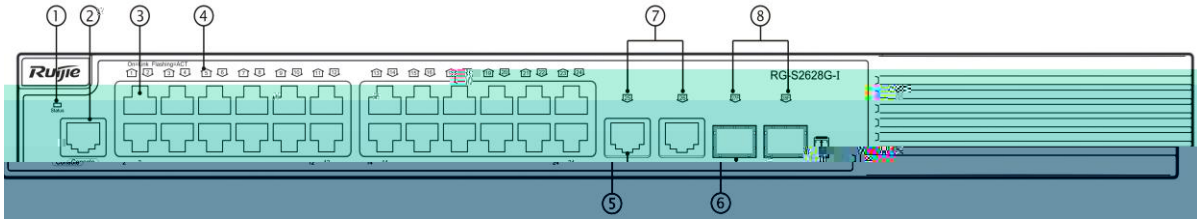
	10/100Base-T	10/100/1000Base-T	1000Base-X SFP	Console
RG-S2628G-I	24	2	2	1
RG-S2652G-I	48	2	2	1

1.1 RG-S2628G-I

	RG-S2628G-I
CPU	500M
BOOTROM	8M
Flash Memory	128M
SDRAM	DDRII 128MB
	Mini-GBIC-SX Mini-GBIC-LX Mini-GBIC-LH40 Mini-GBIC-ZX50 Mini-GBIC-ZX80 Mini-GBIC-ZX100 1000Base-T Mini-GBIC-GT SFP GE-SFP-STACK1.6M <hr/> <hr/>
SFP	1000Base-X 2.5G
	AC

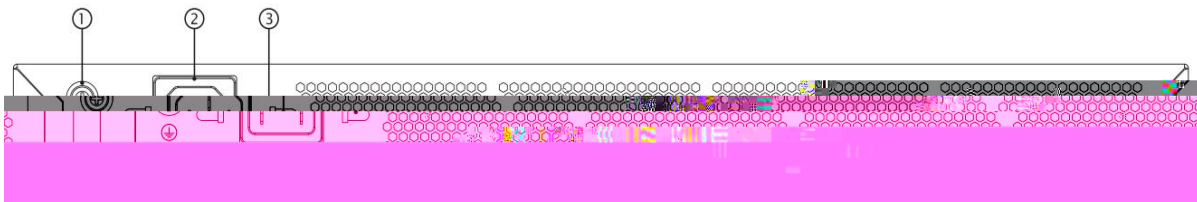
	<p>100-240V~ 90-264V~ 50/60Hz 0.5A</p> <p>HVDC</p> <p>192-290VDC 0.15A-0.07A</p>
	3.5mA
	13W
	0°C ~ 50°C
	-40°C ~ 70°C
	10% ~ 90% RH
	5% ~ 90% RH
EMC	GB9254-2008
	GB4943-2011

1-2 RG-S2628G-I



1	5	10/100/1000Base-T
2 Console	6	1000Base-X SFP /2.5G
3 10/100Base-T	7	10/100/1000Base-T
4 10/100Base-T	8	1000Base-X SFP

1-3 RG-S2628G-I



1	3
2	

RG-S2628G-I

AC

100-240V~

90-264V~

50/60Hz

0.5A

10A

HVDC

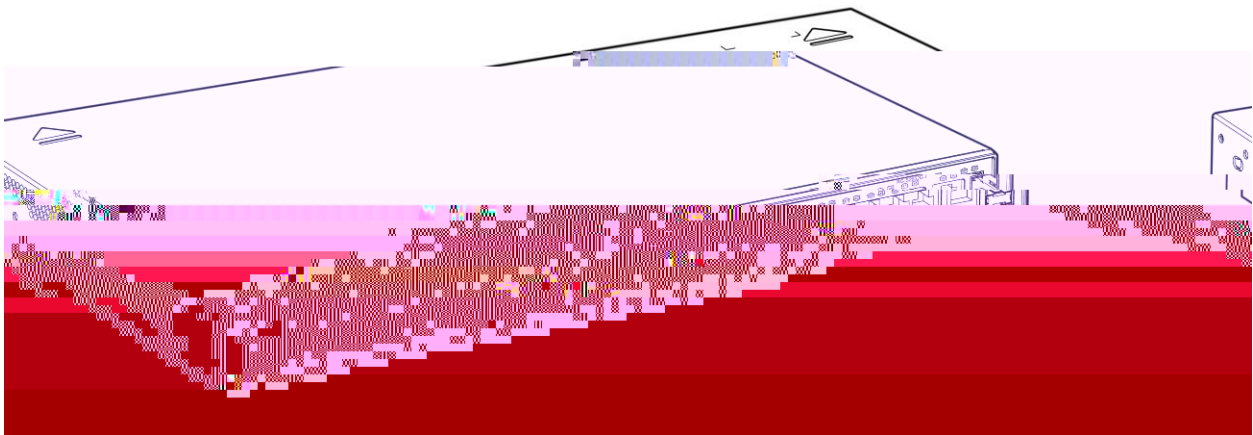
192-290VDC

0.15A-0.07A

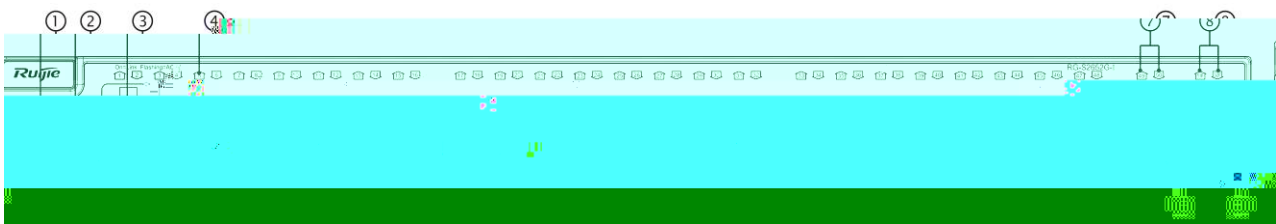
	Status		
			5.2
RJ-45	1~26		Link
			Link up
SFP	27F 28F		Link
			Link Up

1.2 RG-S2652G-I

	RG-S2652G-I	
--	-------------	--



1-5 RG-S2652G-I



1	5	10/100/1000Base-T
2	6	1000Base-X SFP /2.5G
3	7	10/100/1000Base-T
4	8	1000Base-X SFP

1-6 RG-S2652G-I



AC

100-240V~

90-264V~

50/60Hz

0.6A

10A

HVDC

192-290VDC

0.2A-0.12A

RG-S2652G-I

10cm

3



2

2.1

RG-S2600G-I

2.1.1

2.1.2

2.1.3

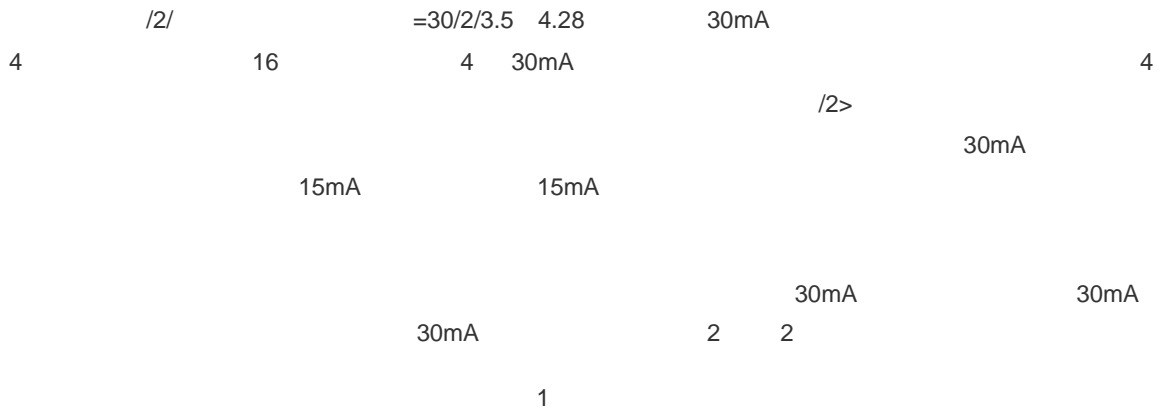
3.5mA

56mA

2
30mA

16

<5



2.1.4

2.1.5

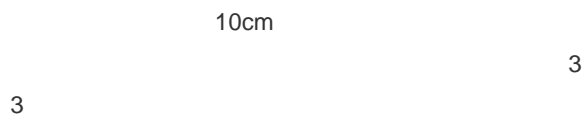
RG-S2600G-I

2.2

RG-S2600G-I

2.2.1

RG-S2600G-I



2.2.2

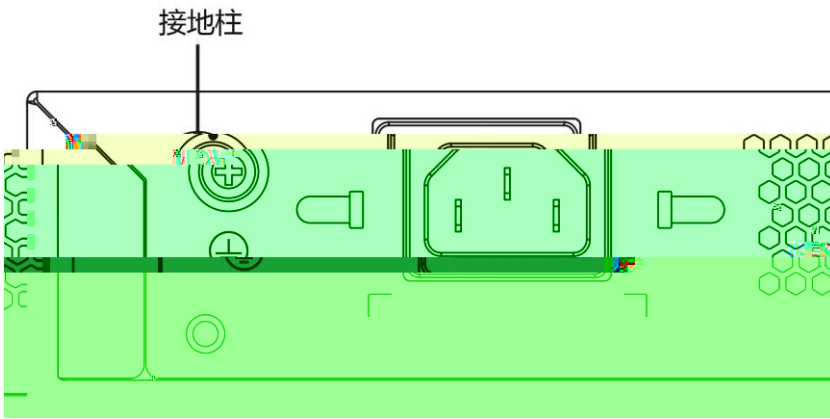
RG-S2600G-I

0°C-50°C	10%-90%

1.5m

0.4m

2.2.3



2.2.9

2.2.10 EMI

2.3

2.4

3

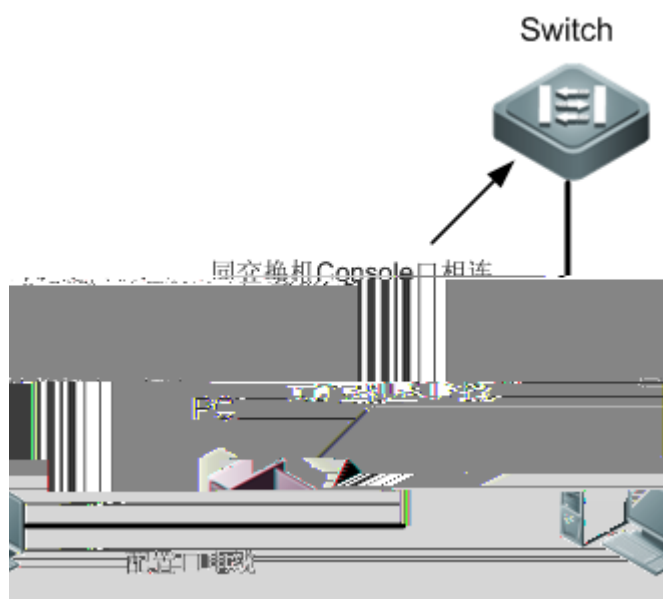
3.1

3.2

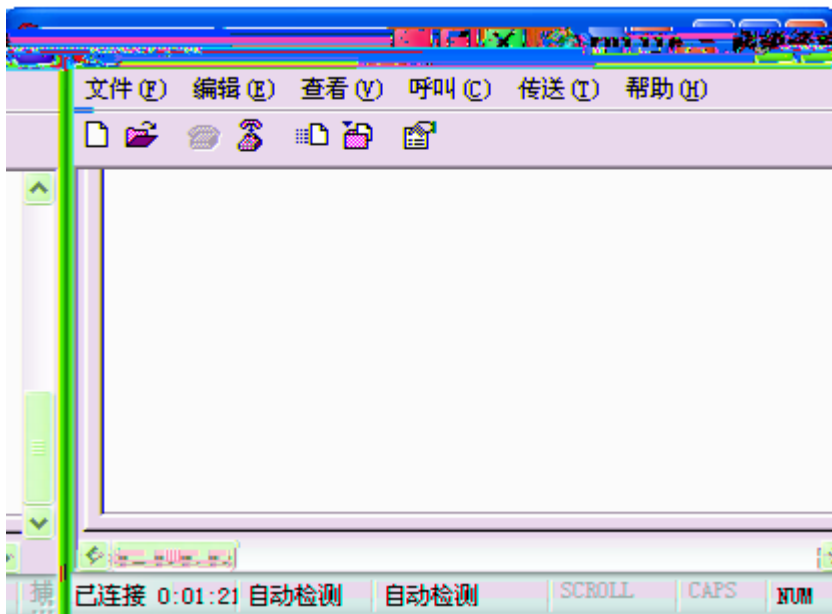
4

4.1

PC Console 4-1
4-1



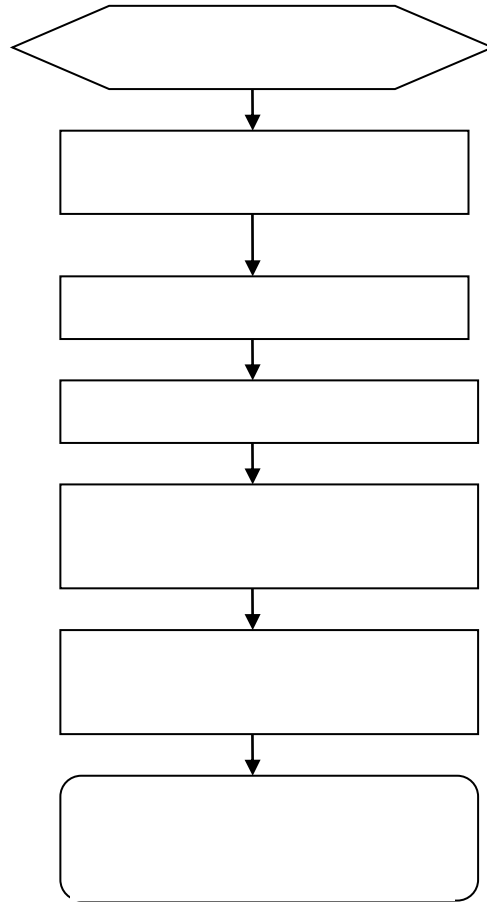
DB-9 PC
RJ-45 Console



4.2

5

5.1



5.2

	-	
status		
Status		
RJ45	100	

A

1000BASE-T/100BASE-TX/10BASE-T

1000BASE-T/100BASE-TX/10BASE-T

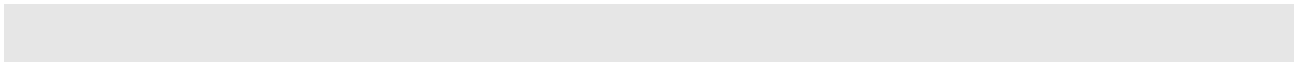
MDI/MDIX Crossover

1000BASE-T	IEEE 802.3ab		100-ohm 5	5	UTP	STP
	STP	100				

1000BASE-T	4		4	1000BASE-T
------------	---	--	---	------------

A-1

A-1 1000BASE-T



Switch	Switch	Switch	Switch
1 TP0 +	1 TP0 +	1 TP0 +	1 TP0 +
2 TP0 -	2 TP0 -	2 TP0 -	2 TP0 -
3 TP1 +	3 TP1 +	3 TP1 +	3 TP1 +
6 TP1 -	6 TP1 -	6 TP1 -	6 TP1 -
4 TP2 +	4 TP2 +	4 TP2 +	4 TP2 +
5 TP2 -	5 TP2 -	5 TP2 -	5 TP2 -
7 TP3 +	7 TP3 +	7 TP3 +	7 TP3 +
8 TP3 -	8 TP3 -	8 TP3 -	8 TP3 -

100BASE-TX/10BASE-T

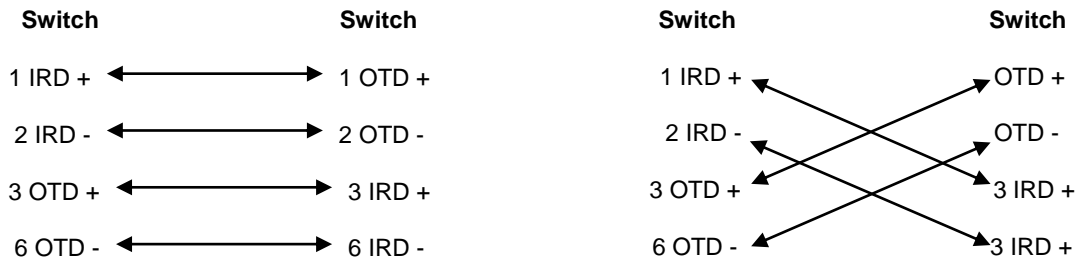
10Mbps

100-ohm 3,4,5

100Mbps

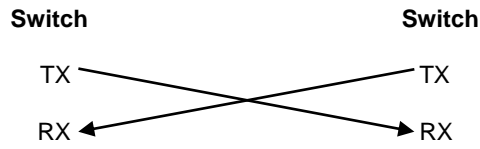
100-ohm 5

100



A-4:

A 4



B Mini-GBIC

C

3.7km

3.7km

2km
5km

600mm