



copyright © 2021

Ruijie Networks Ruijie锐捷 Ruijie锐捷网络 锐捷网络

Ruijie 锐捷网络 Ruijie RGOS® RGNOS

锐捷网络 Red-Giant® Red-Giant锐捷® 锐捷®



# 1

RG-AG

RG-AG

## 1.1 RG-AG320

	RG-AG320
	DDR3 SDRAM 2GB
	BOOTROM 8MB
	FLASH 128MB 1.10 512MB 1.20
	SATA 500G
I/O	WAN 2 10/100/1000M 0/6 0/7 WAN 1000BASE-SX/LX/ZX mini GBIC GE-SFP-LX20/LH40-BIDI
	LAN 6 10/100/1000M 0/0 0/1 0/2 0/3 0/4 0/5 WAN/LAN
	1
	1
	USB 2
	BYPASS 0/5-0/6 BYPASS BYPASS BYPASS
	1
	10Base-T/100Base-TX/1000Base-TX 1000BASE-SX/LX/ZX RS-232
x x mm	440x43.6x200

1-1 RG-



WAN/LAN

0-7	link/ACT	/ / Link
0-7	speed	/
6F-7F		link

### 1.3 RG-AG515

	RG-AG515										
	DDR3 SDRAM 4GB										
	BOOTROM 8MB										
	FLASH 512MB										
	SATA 500G										
I/O	8		4						WAN/LAN		
	0/0 0/1 0/2 0/3		LAN		0/4 0/5 0/6 0/7		WAN				
	4										
	10/100/1000M										
	1000BASE-SX/LX/ZX mini GBIC								GE-SFP-LX20/LH40-BIDI		
	1										
	1										
	USB	2									
	OBS	BYPASS 2									
BYPASS	BYPASS		0/2-0/4 0/3-0/5						BYPASS		
	BYPASS										
	BYPASS										
	2	RG-M5000E-AC60		2							
	2			1		SATA0					
	10Base-T/100Base-TX/1000Base-TX 1000BASE-SX/LX/ZX										

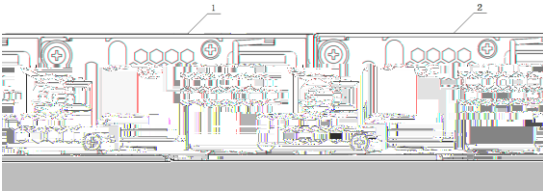


## 1.4

### 1.4.1 RG-M5000E-AC60

1-7 RG-M5000E-AC60

2



	AC

	RG-M5000E-AC60
	RG-AG515
	100-240V~ 50-60Hz
	90~264V~ 50-60Hz
	60W
	1+1
	13.4~16V
	6~12A

**2**

**2.2.2**

	0.5	1	3	5
	1.4×10 <sup>7</sup>	7×10 <sup>5</sup>	2.4×10 <sup>5</sup>	1.3×10 <sup>5</sup>

	mg/m <sup>3</sup>	mg/m <sup>3</sup>
	0.2	1.5
	0	0.03
	0.04	0.15
	0.05	0.15
	0.01	0.3

**2.2.3**

**2.2.4**

## 2.2.5

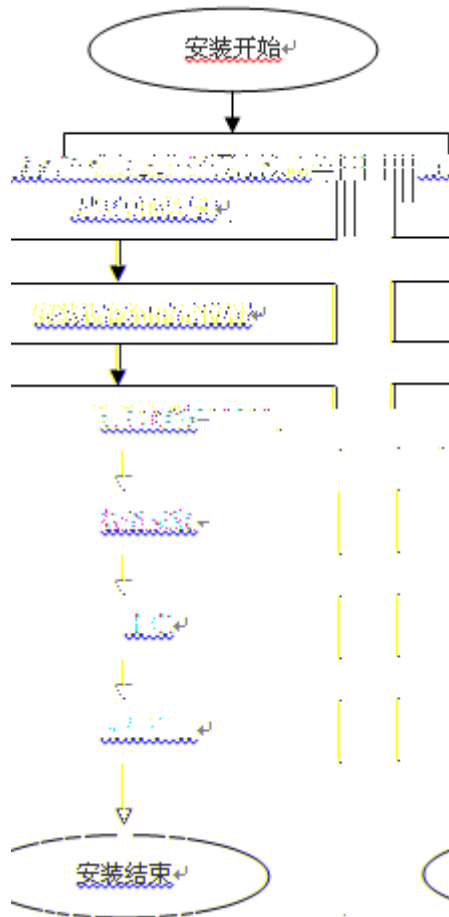
19"

## 2.3

	HUB PC

### 3

#### 3.1



#### 3.2

### 3.3

RG-AG

100-240V~/50-60H

---

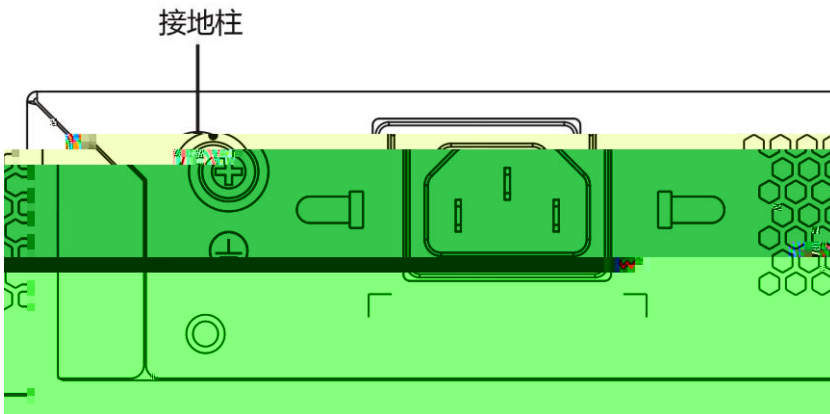
---

### 3.4

RG-AG

1

3-1 RG-AG



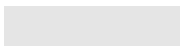
### 3.5

RG-AG

EIA/TIA-232

Console

WEB



	2.
	3.

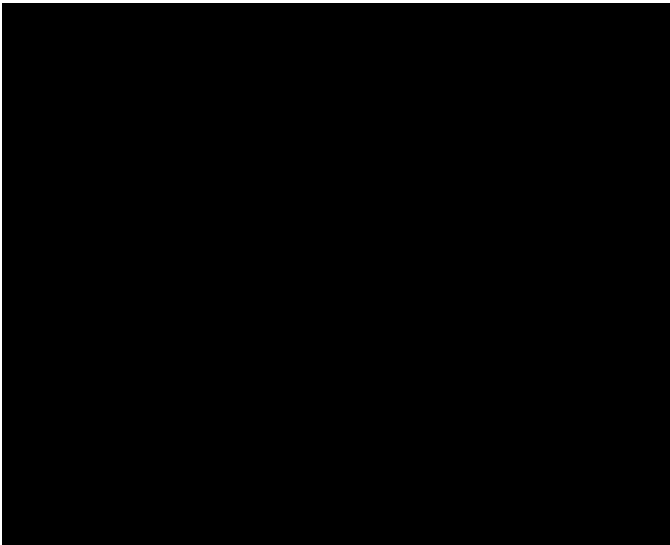
DB-9

### 3.6

# 4

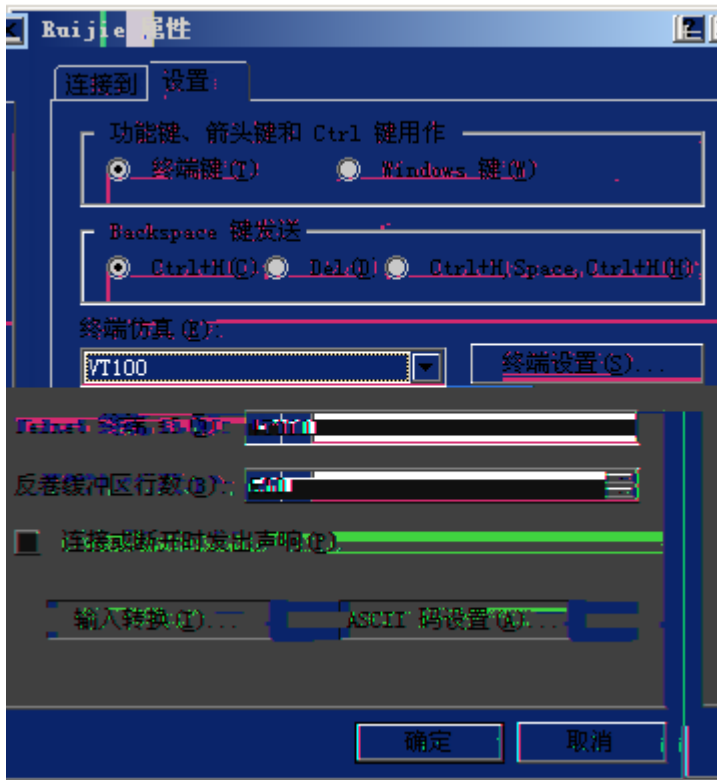
## 4.1 Console

- 1) Console RS232 Console Windows
  - 2) Hyperterm
  - 3) 9600 8 1 4-3
  - 4) " " -> " " -> " " VT100 4-4
- 4-1



4-2 Console





## 4.2

a

" ON"

" "

\*\*\*\*\*



## 5

### 5.1

PWR