

WEB

APP

CLI



WEB

WEB

The screenshot displays a network management interface with several key sections:

- 设备概览 (Device Overview):** Located at the top, it includes tabs for '设备概览' and '设备接口信息'.
- 接口列表 (Interface List):** A table with columns: 接口名称 (Interface Name), 接口类型 (Interface Type), 接口状态 (Interface Status), 所属VLAN (VLAN), and IP地址/掩码 (IP Address/Mask).

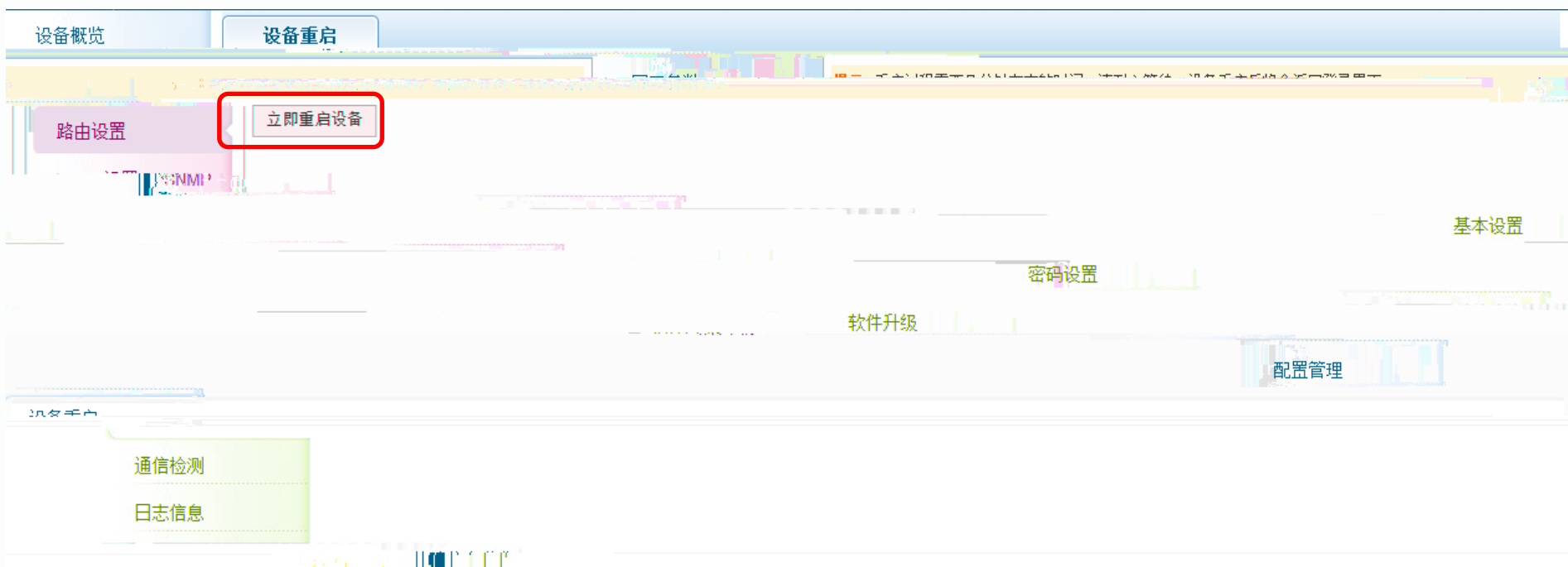
接口名称	接口类型	接口状态	所属VLAN	IP地址/掩码
GigabitEthernet 1/1	二层交换口	已连接	1	
GigabitEthernet 1/2	二层交换口	未连接	1	
GigabitEthernet 1/3	二层交换口	未连接	1	
- 设备温度及内存 (Device Temperature and Memory):** A bar chart showing resource usage.
- CPU利用率 (CPU Usage):** A bar chart showing a usage rate of 0.01%.
- 配置管理 (Configuration Management):** A section for managing device settings.
- 设备信息 (Device Information):** Includes fields for 设备名称 (Device Name), 设备型号 (Device Model), 设备序列号 (Device Serial Number), and 设备IP (Device IP).
- 故障信息收集 (Fault Information Collection):** A section for monitoring and logging faults.



Ruip

www.ruip.com

WEB



WEB

Ping

icmp
Traceroute

4G

WEB

WEB

设备概览

系统日志

网口参数

显示系统日志

路由设置

SNMP设置

syslog logging: enabled

Parents (log)log: level debugging, 12345 messages (log)

Parents (log)log: level debugging, 12345 messages (log)

密码设置

文件一级

设备管理

通信检测

日志信息

新增信自收集

WEB

CPU

设备概览

故障信息收集

网口参数

非业务故障信息

路由设置

SNMP设置

基本设置

System start time : 2014-08-04 15:50:17

密码设置

软件升级

System BOOT version : 10.4(3b13)T19 Release(175810)

日志信息

故障信息收集



Ruijie

www.ruijie.com.cn

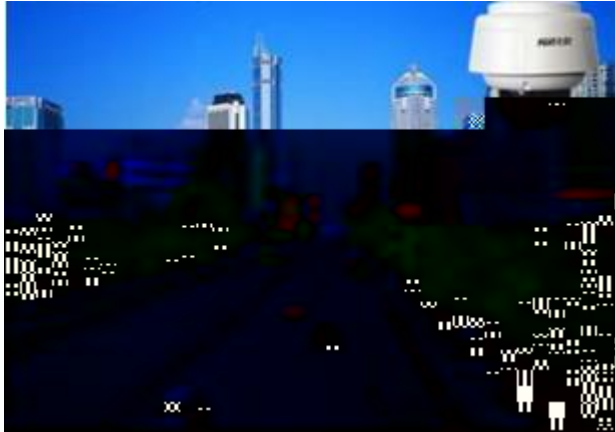
WEB

APP

CLI



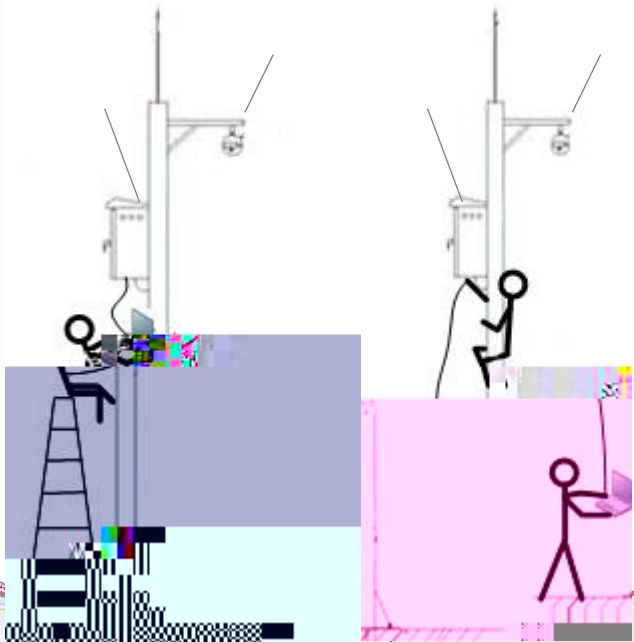
APP



1

2

**RSR10-01G-TD-
LTE RSR820-T/820-T(A)**





APP

Android

Android

"

" APP

<http://bnm.ruijie.com.cn>

"

"



APP

10



" 1234 "



APP



APP

4G
4G
SIM
CPU

4G

APP

.text

SD

"

"





APP

Riite

www.riite.fi

APP

ICMP

4G

XX

4G

APP





APP

CLI

CLI

1

APP

2

APP

3

4

IP

5



APP

APP
txt

2G/3G/4G



APP

wifi

10

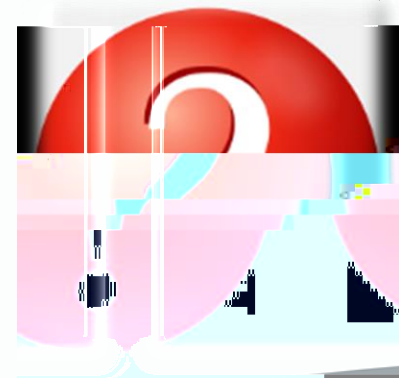
10

ruijie

ruijie

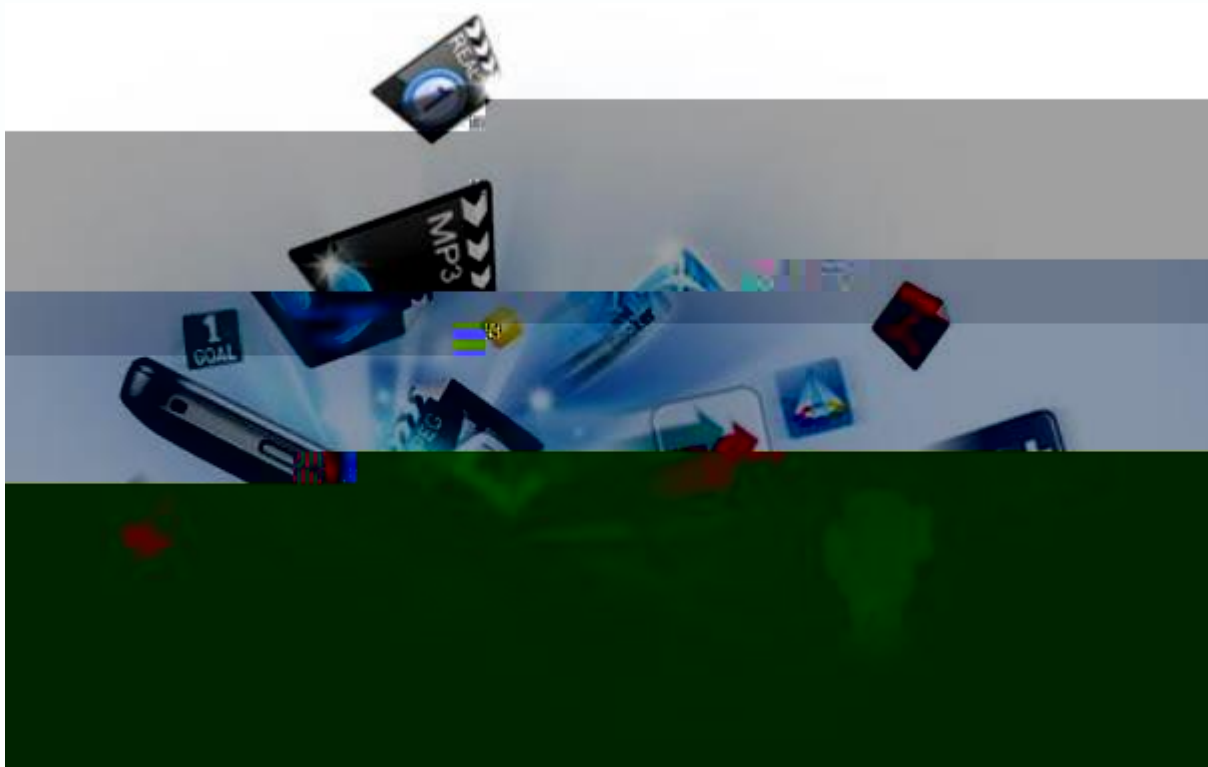
0000

1234

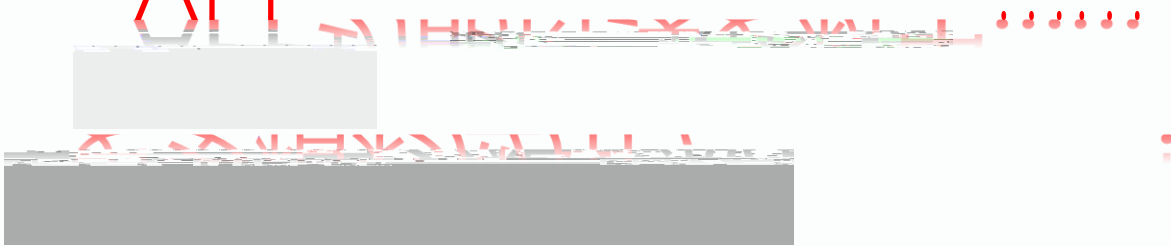




APP



APP

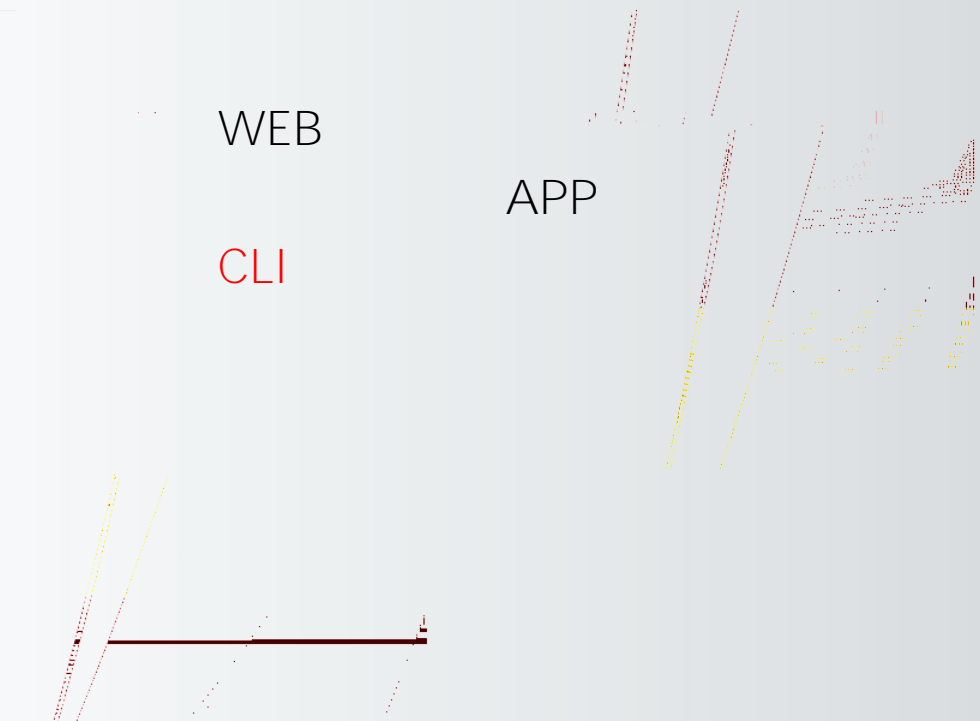




WEB

APP

CLI



CLI

CLI

RSR820

RGOS

CLI

RGOS

CPU

show cpu cpu

Ruijie#show cpu

=====

CPU Using Rate Information

CPU utilization in five seconds: 12.12%

CPU utilization in one minute : 12.07%

CPU utilization in five minutes: 12.07%

show memory

Ruijie#show memory

System Memory Statistic:

Free pages: 54998

watermarks : min 2140, lower 4025, low 5910, high 7795

System Total Memory : 512MB, Current Free Memory : 225428KB

Used Rate : 57%



CLI

show interface

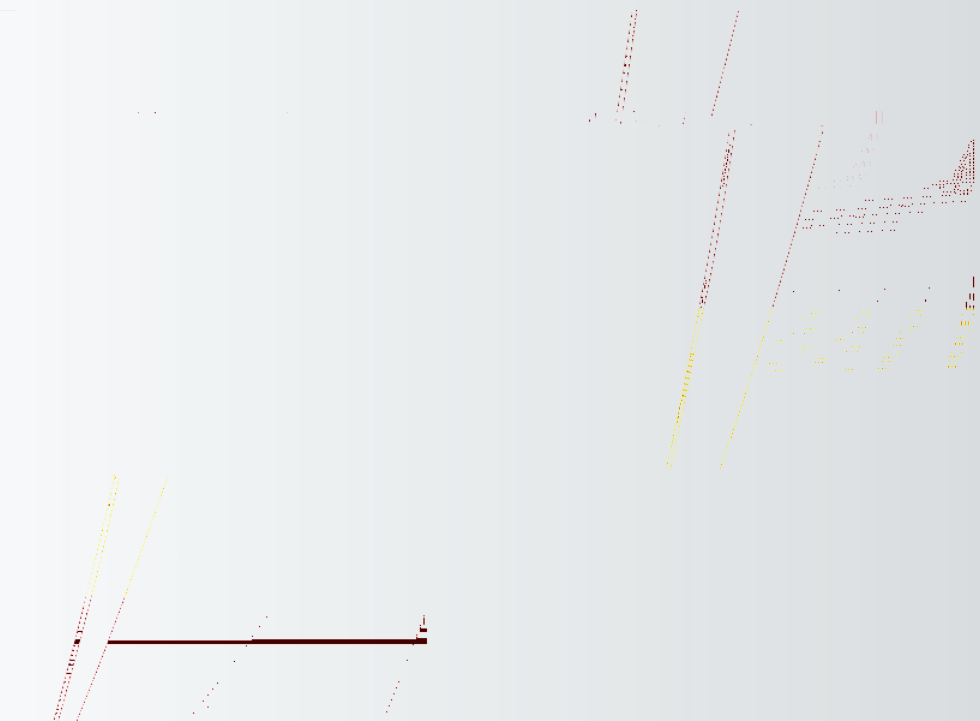
CLI

```
show log  
UP/DOWN DOWN !
```

```
flash
```

```
flash
```

```
Ruijie(config)#logging file flash:log 2000000 7 // 记录到flash
```



WEB

WEB IP

WEB

WEB

console

WEB IP

IP

<http://192.168.1.1>

Ruijie#show ip interface brief

Interface	IP-Address(Pri)	IP-Address(Sec)	Status	Protocol
VLAN 1	192.168.57.92/24	no address	up	up
Tunnel 1	2.2.2.2/24	no address	up	down
Cellular 0/0	no address	no address	down	down

console

Ruijie#show service

.....

web-server : enabled

web-server(https): enabled



console

console

PC

COM

Console

console



WEB

console

%Now Begin Download File FileList.txt From 192.168.64.1 to 192.168.64.78

send download request.

send download request.

.....

RGOS

TFTP

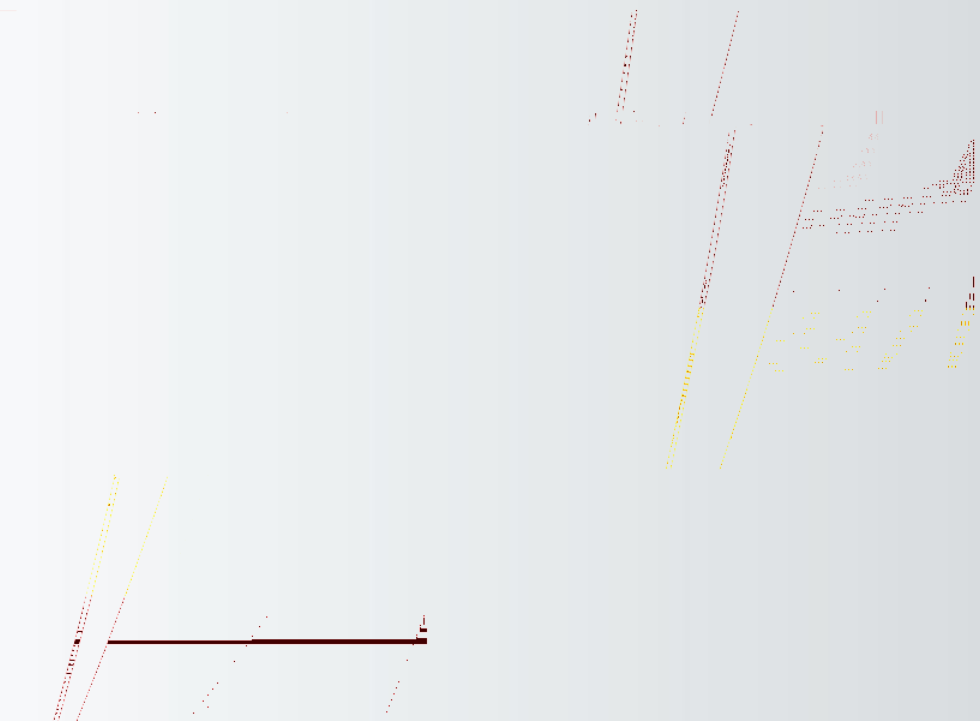
"

"

BOOT



show slot



WEB

WEB

路由设置

恢复出厂设置

SNMP设置

基本设置

密码设置

软件升级

配置管理

设备重启

通信检测

日志信息

故障信息收集

Ruijie

www.ruijie.com.cn

MAIN

Ruijie#dir

Directory of flash:/

Mode	Link	Size	MTime	Name
1		2363	2013-01-15 10:07:19	config.text
1		15107168	2013-01-15 09:47:59	rgos.bin

.....

Ruijie#copy flash:config.text flash:config.bak// config.bak

Ruijie#delete config.text //

Are you sure you want to delete " config.text" ?[No/yes]yes //

Ruijie#reload //

Proceed with reload? [no]y //

BOOT

console

" Press Ctrl+C to enter Boot" ctrl+c

boot

BootLoader>dir

Directory of flash:/

Mode	Link	Size	MTime	Name
1		512	2013-01-09 23:07:03	Boot_hotcmd.cfg
1		2363	2013-01-15 10:07:19	config.text
			
1		15107168	2013-01-15 09:47:59	rgos.bin



BOOT

```
BootLoader>rename config.text config.bak // config.bak
```

```
BootLoader>delete config.text //
```

```
BootLoader>load //
```

.....

WEB

WEB

“ ”

“ ”

“ ”

注意事项:

升级可以系统固件 (*.bin)，升级完成后必须重启设备才能生效。

升级可以升级MIB (*.mib)，升级完成后无需重启设备。

网门参数

路由设置

SNMP设置

基本设置

密码设置

软件升级

配置管理

设备重启

版本信息

硬件版本:	1.00
软件版本:	RGOS 10.4(3b13)T19 Release(176433)
WEB版本:	1.1.3(176433)

文件路径:

 浏览...

升级进度:

0%

状态信息: 未指定升级文件。



日志信息

故障信息收集

MAIN

	PC	IP		PC
PC	TFTP			TFTP
		TFTP		FLASH

```
copy tftp://[pc_ip]/[file_name] flash:rgos.bin
```

```
Ruijie#copy tftp://1.1.1.1/rgos.bin flash:rgos.bin
```

```
1.1.1.1 PC
```



BOOT

PC

TFTP

TFTP

ctrl+C

ROM

TFTP



www.ruijie.com.cn

www.ruijie.com.cn/service.aspx

support.ruijie.com.cn

webchat.ruijie.com.cn

4008-111-000