



©2013



<http://www.ruijie.com.cn/>

| | |
|--|--------------------|
| | RG-WALL1600-M5100E |
| | 1.0 |
| | |
| | |
| | PDF |

| | | | | |
|--|--|--|--|--|
| | | | | |
| | | | | |
| | | | | |
| | | | | |
| | | | | |

1

RG-WALL1600-M5100E

IPSec SSL VPN Web
 IPv4 IPv6 NAC SSL

RG-WALL1600-M5100E

RG-WALL1600-M5100E

1.1 RG-WALL1600-M5100E

| | |
|---|----------------------------------|
| | RG-WALL1600-M5100E |
| | |
| | 0 to 40°C |
| | -25 to 70°C |
| | 20% 90% RH |
| | 5.6Kg |
| | 394x432 x 44.45 L * W * H mm 1RU |
| | 100-240 VAC, 50-60 Hz |
| | 110 V / 3 A, 220 V / 1.5 A |
| / | 34W/40 W |
| | 335 BTU/h |

RG-M5100E

A

RG-WALL1600-M5100E

1

3+5 Q ‡ Ö3+5 Q ‡

1 USB

RG-WALL1600-M5100E

1-2

1-2 RG-WALL1600-M5100E

以太网端口 1 - 38 (RJ-45)

千兆以太网连接

WAN 端口 1 & 2 (RJ-45)

千兆以太网连接



2

0μ\$#Ä

2.1

RG-WALL1600-M5100E

2.1.1

2.1.2

2.2.3

RG-WALL1600-M5100E

2.2.7 EMI

2.3

2.4

| | |
|--|--|
| | |
| | |
| | |
| | |

RG-WALL1600-M5100E

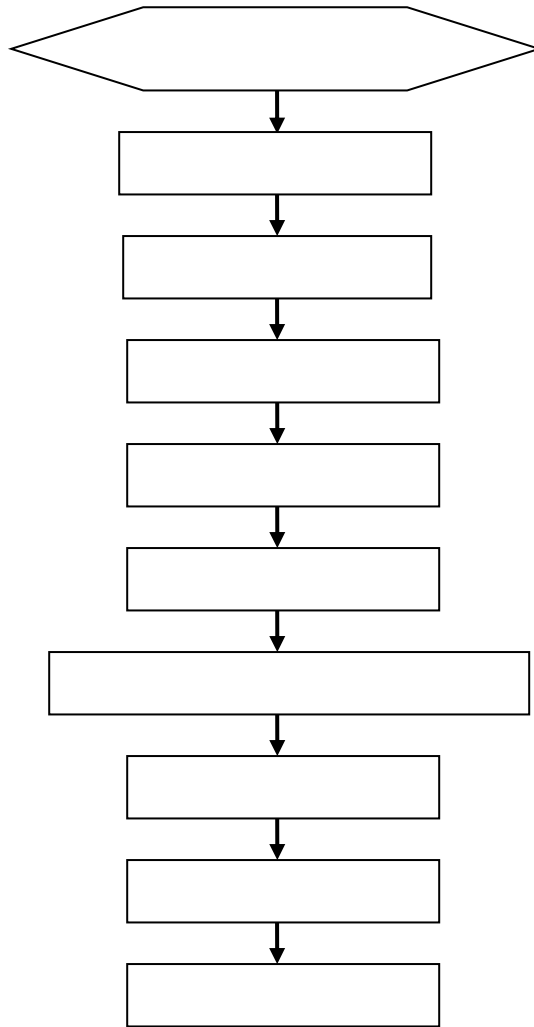
2.5

| | | | | | | | |
|--|---|---|-----|---|---------|---|---|
| | 2 | 2 | USB | 2 | Console | 8 | 4 |
| | | | SFP | | | | |

3

RG-WALL1600-M5100E

3.1



3.2

RG-WALL1600-M5100E

3.3

1)

2)

3)

4)

3.7

1)

2)

3)

3.8

3.9

G: D

SFP

SFP

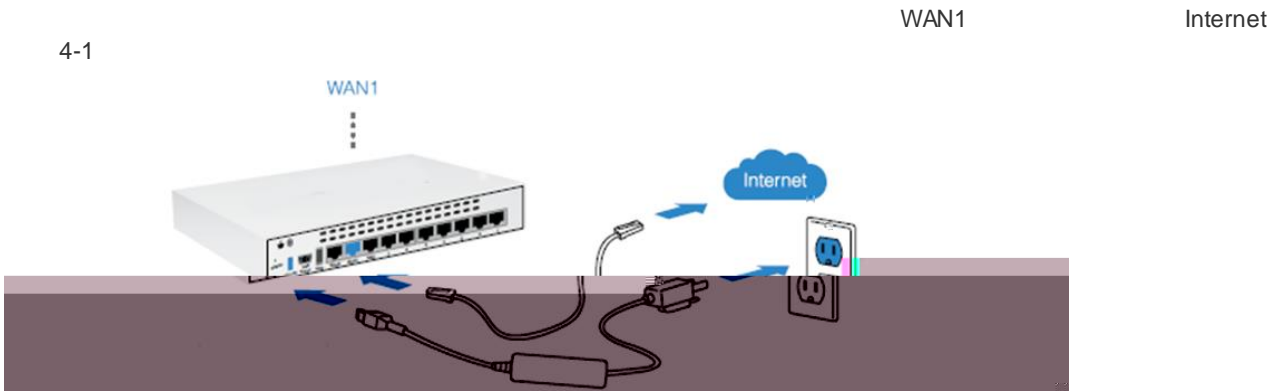
4)

5)

6)

4

4.1



4-1

Web

admin

LAN

PC

IP : <https://192.168.1.99>



4-2

7 cbgc`Y

PC

Console

12)

14

13)

| | | | | | | |
|-----|-----------|-----|---------|---------|---------|-----|
| | Console | USB | Console | Console | USB | PC |
| USB | PC 4-3 | | | | COM LPT | COM |

(COM5) Prolific USB-to-Serial Comm Port

4-3

9600 8 1

14)

not connected - SecureCRT

File Edit View Options Transfer Script Tools Help

Connect

New Session Wizard

This wizard will help you create a new session for connecting to:

What type of connection do you want to establish?

Protocol: Serial

Ready

Do not use this wizard when creating sessions

取消 下一步(N) > 完成

5

5.1

RG-WALL1600-M5100E

RG-WALL1600-M5100E
RG-WALL1600-M5100E

RG-WALL1600-M5100E Internet
RG-WALL1600-M5100E

Telnet

5.2

6

6.1

6.2

%

(

) `]b_

link

1

2

3

4

1310nm

1550nm

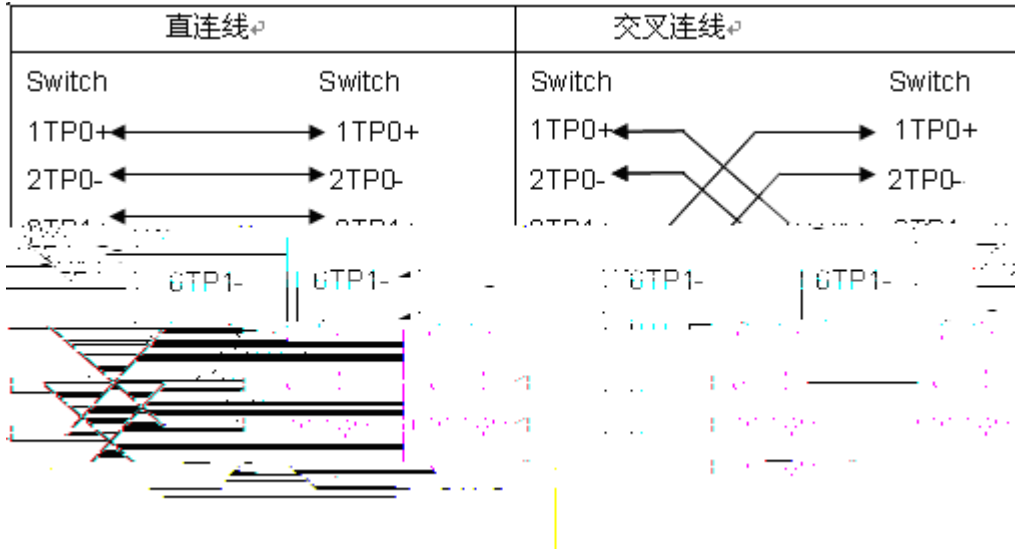
A 1 1

1000BASE-T/100BASE-TX/10BASE-T

MDI/MDIX Crossover

1000BASE-T IEEE 802.3ab 100 1000BASE-T 4 100-ohm 5 5 4 UTP 4 STP 1000BASE-T

A-1 1000BASE-T



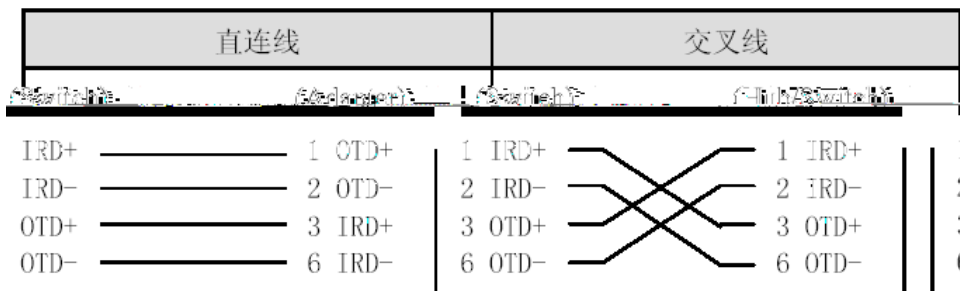
100BASE-TX/10BASE-T 100-ohm 5 100 10Mbps 100-ohm 3,4,5 100BASE-TX/10BASE-T 100Mbps

A-2 100BASE-TX/10BASE-T

| Pin | 插座 | 插头 |
|-----|---------------------|-----------------------|
| 1 | Input Receive Data+ | Output Transmit Data+ |
| 2 | Input Receive Data- | Output Transmit Data- |

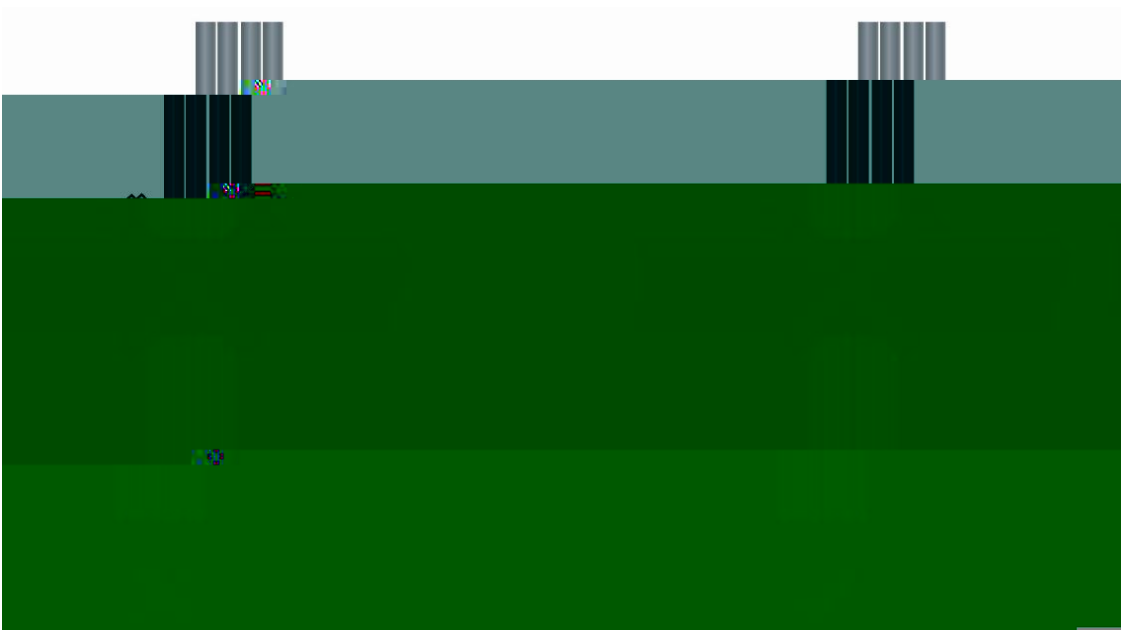
100BASE-TX/10BASE-T

A-3 100BASE-TX/10BASE-T



A 4





D-3

D-3



220V

-48V

D-4

D-4

| mm | mm |
|-------|---------|
| 10 | 80~150 |
| 10~30 | 150~200 |
| 30 | 200~300 |